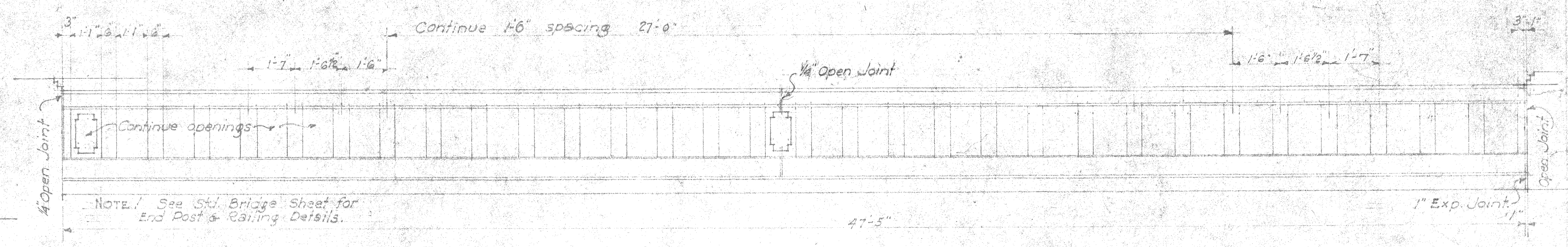


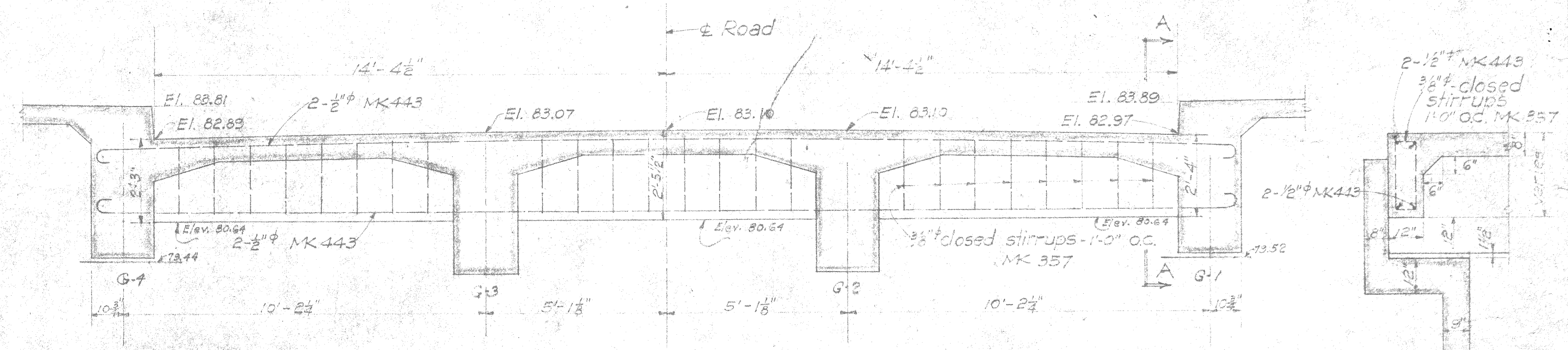
LAYOUT PLAN.
Scale 1"=10'

SPECIFICATIONS FOR ASPHALT FILLER:
Melting Point 150-200 (A.S.T.M. D34-22)
Penetration 30-40 (A.S.T.M. D5-25)
Mask Point min 400 (A.S.T.M. D23-22)



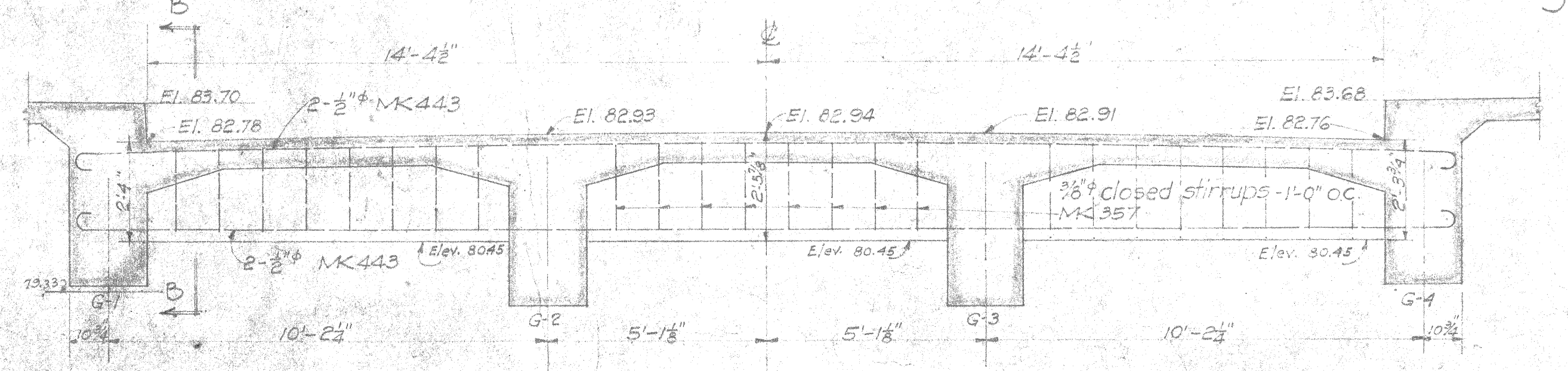
RAILING LAYOUT.
3/8" Scale.

NOTE: See Std. Bridge Sheet for End Post & Railing Details.

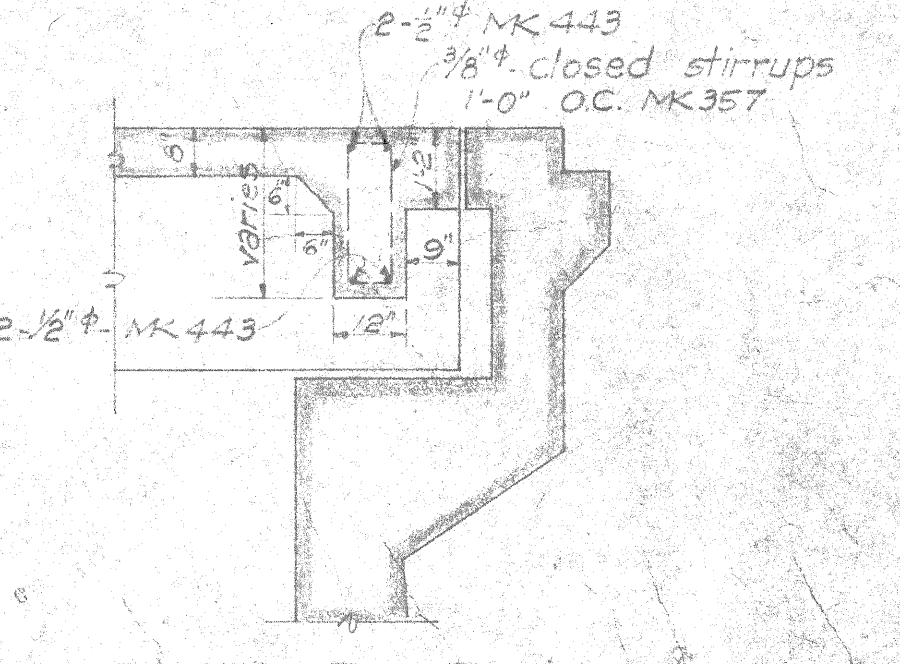


TRANSVERSE BEAM AT FIXED END
3/8" Scale

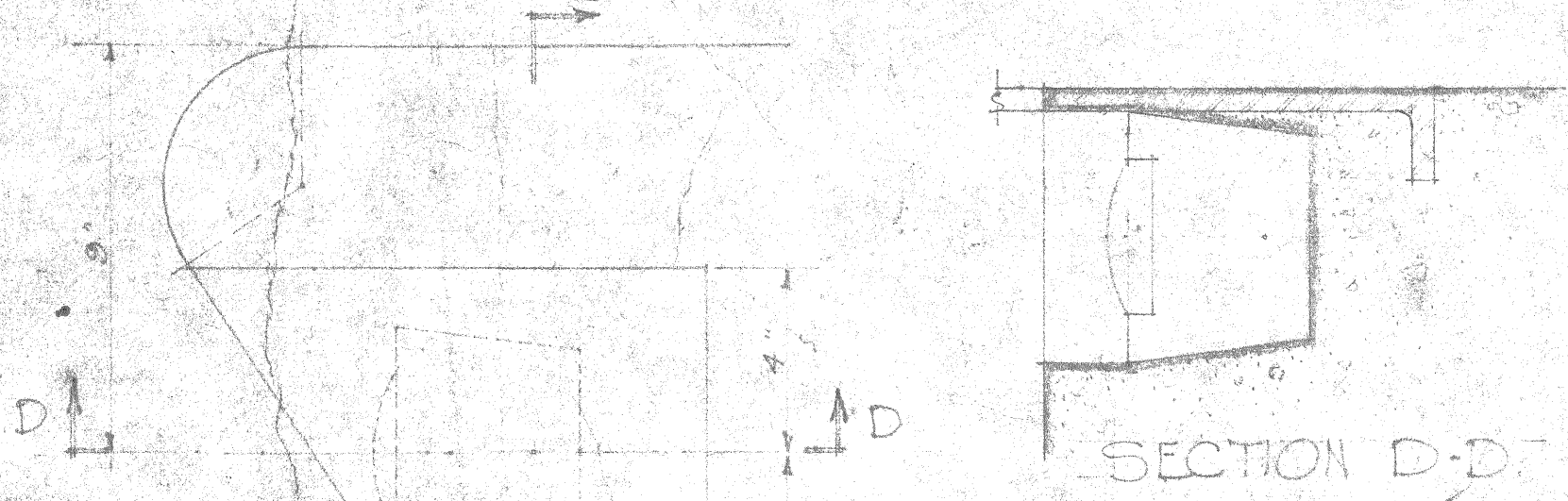
SECT. A-A
3/8" Scale



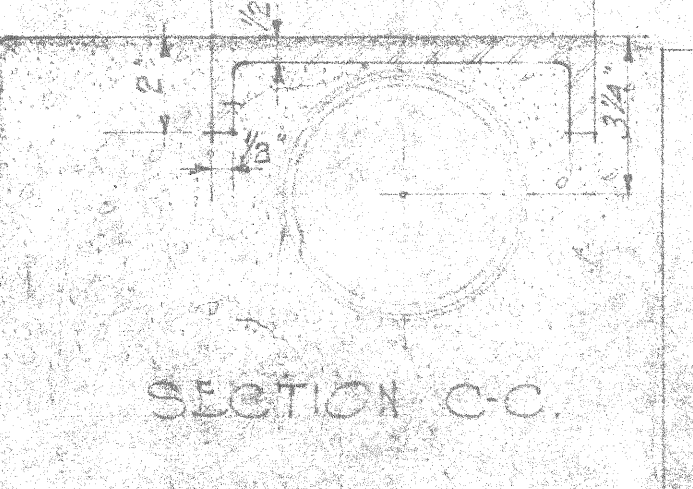
TRANSVERSE BEAM AT EXP. END.
3/8" Scale



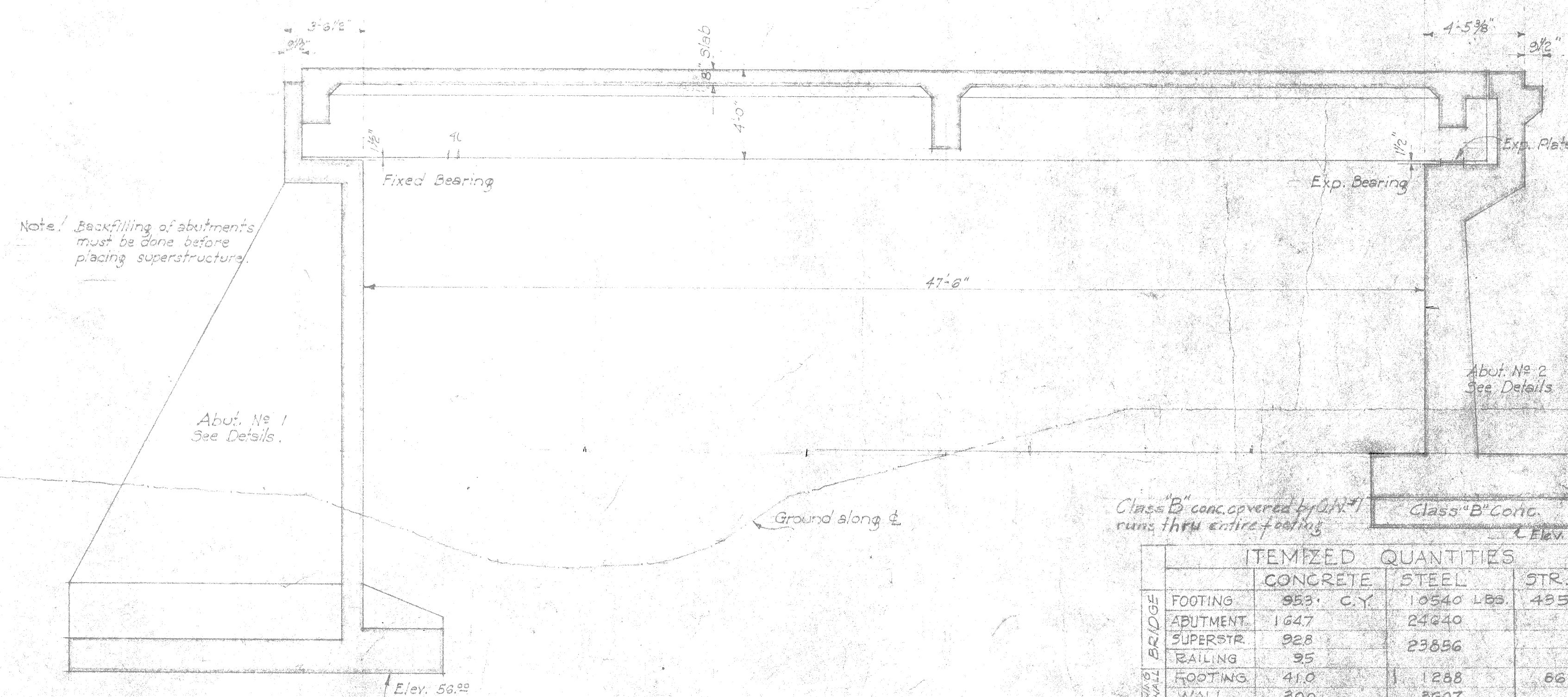
SECT. B-B
Scale 3/8"



SECTION D-D



SECTION C-C



SECTION ALONG FACE OF G-2
1/4" Scale.

Note: Backfilling of abutments must be done before placing superstructure.

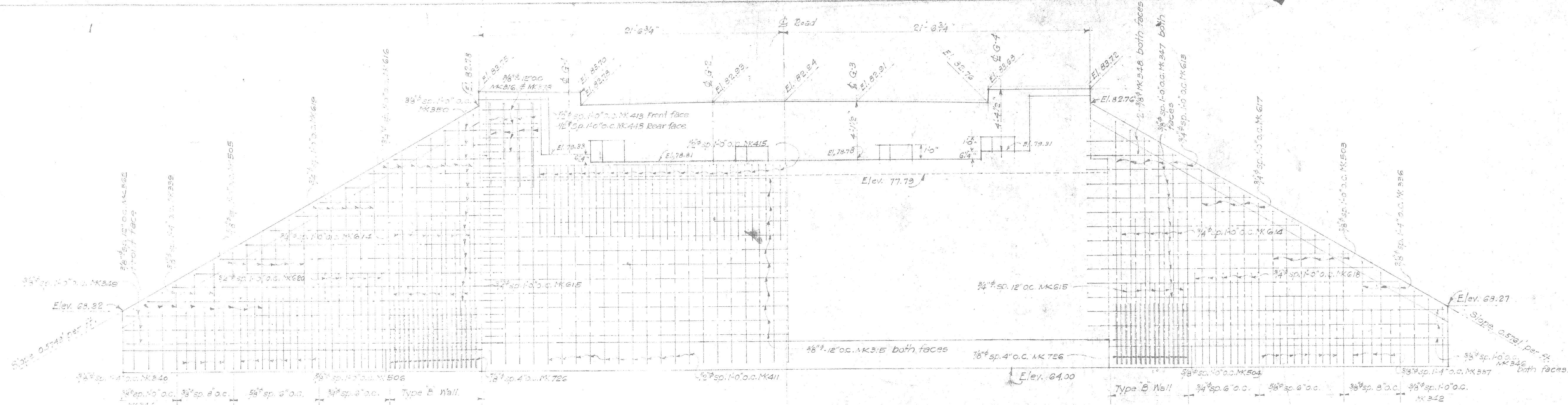
Class "B" conc. covered by G.N. runs thru entire footing. Elev. 42.7

ITEM	ITEMIZED QUANTITIES		
	CONCRETE	STEEL	STR. EXC.
FOOTING	953 C.Y.	10540 LBS.	455 C.Y.
ABUTMENT	1647	24640	
SUPERSTR.	928	23656	
RAILING	35		
FOOTING	41.0	1288	66
WALL	300	3607	
TOTALS	4999 C.Y.	63937 LBS.	152 C.Y.

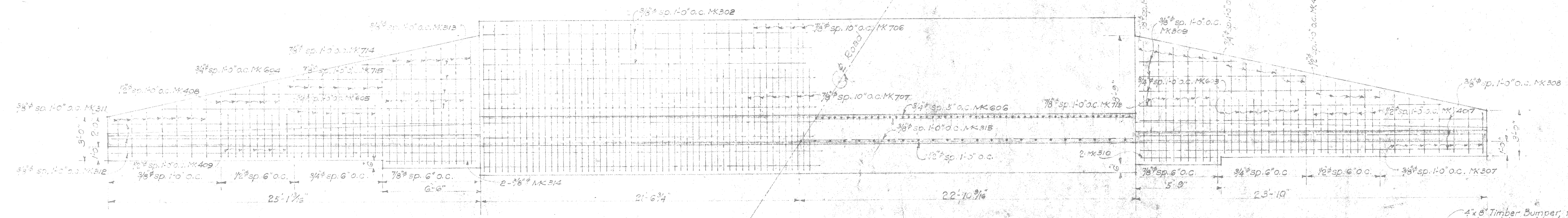
BULLS EYE REFLECTOR
3" Scale.

Note: Bulls eye reflector to be furnished by Terr. H. Dept. and be installed by the Contractor. Bronze plates to be furnished by Contractor. Material for top plate of Bulls eye reflector to be of Phosphor Bronze, same as bearing plate material.

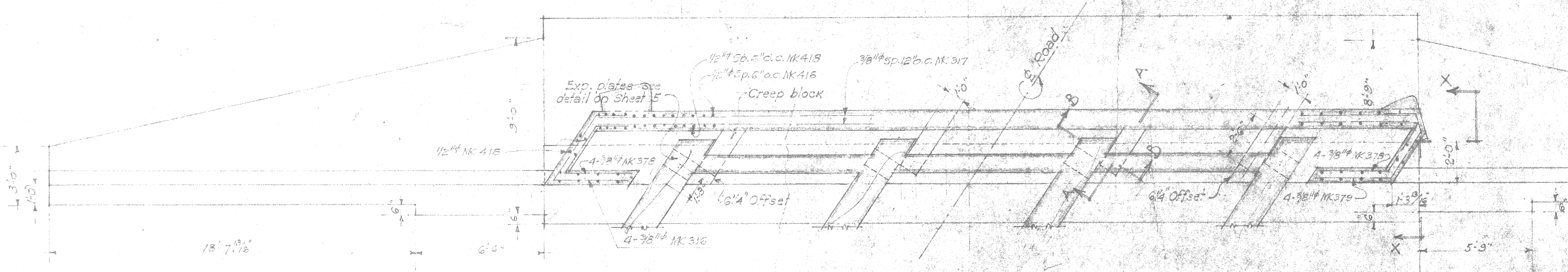
STATE	FED. AID PROJ. NO.	FISCAL YEAR	DATE	BY
HAWAII	HAW 4C	1938	38	75



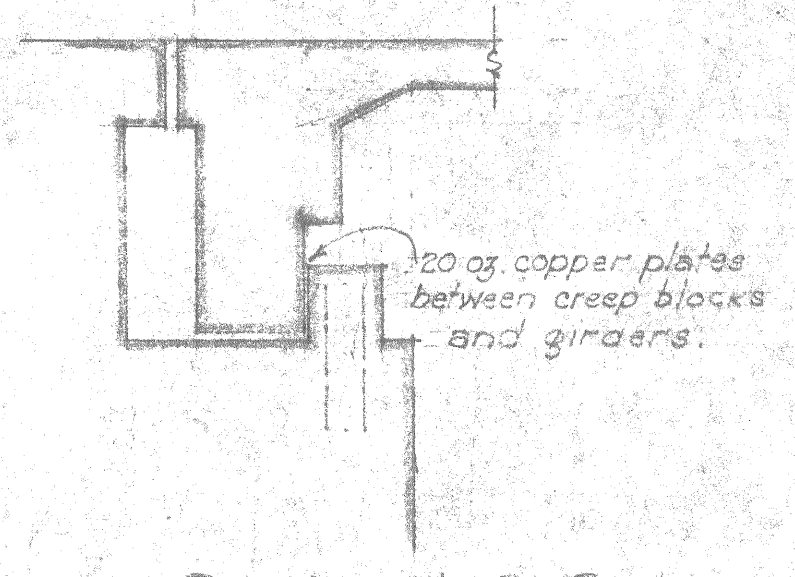
ABUTMENT NO. 2.
1/4" Scale.



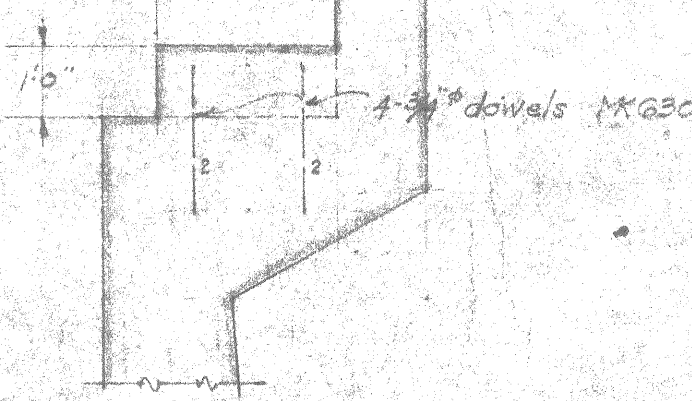
ABUTMENT NO. 2 FOOTING REINF.
1/4" Scale.



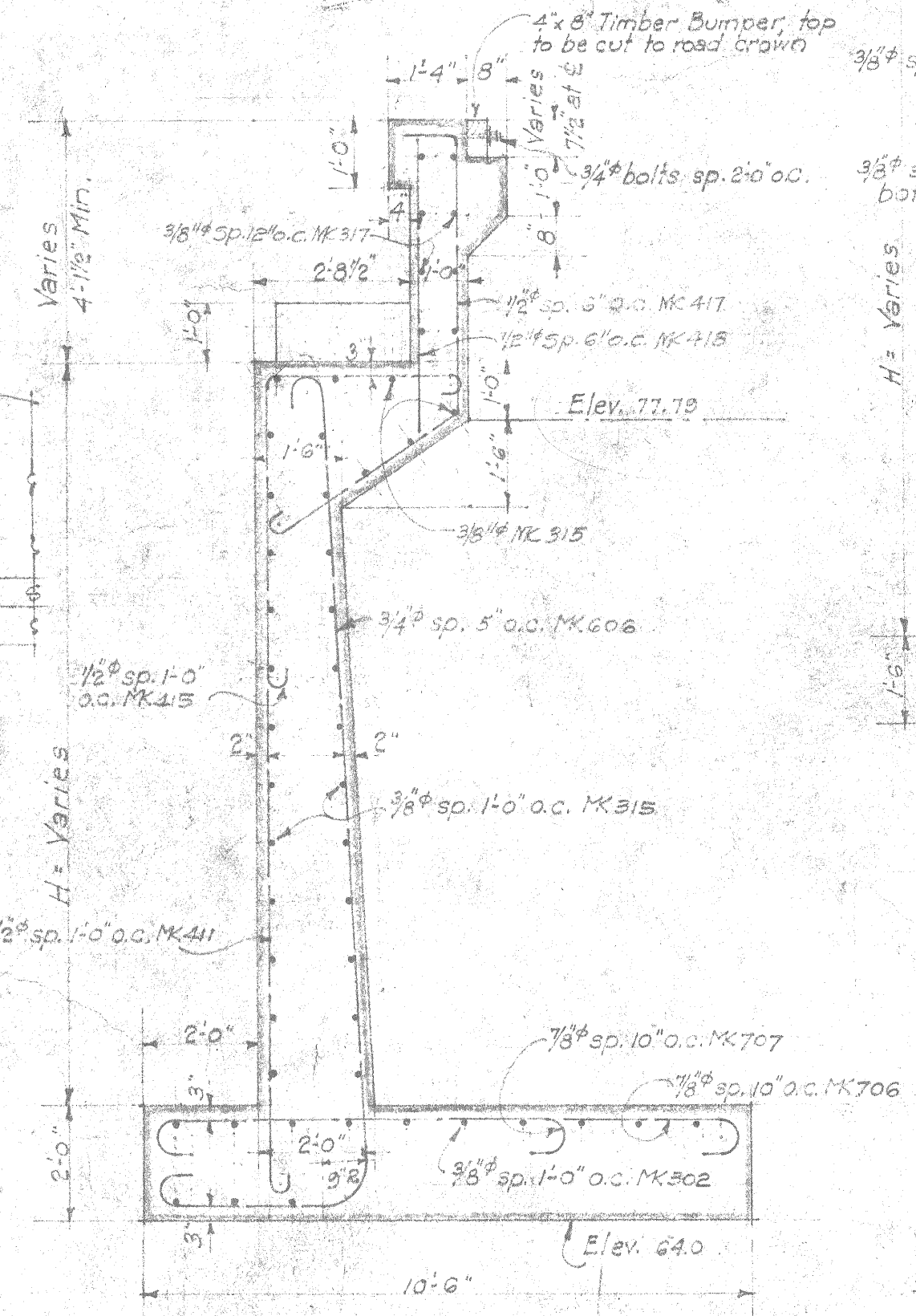
SECTION X-X.
1/4" Scale.



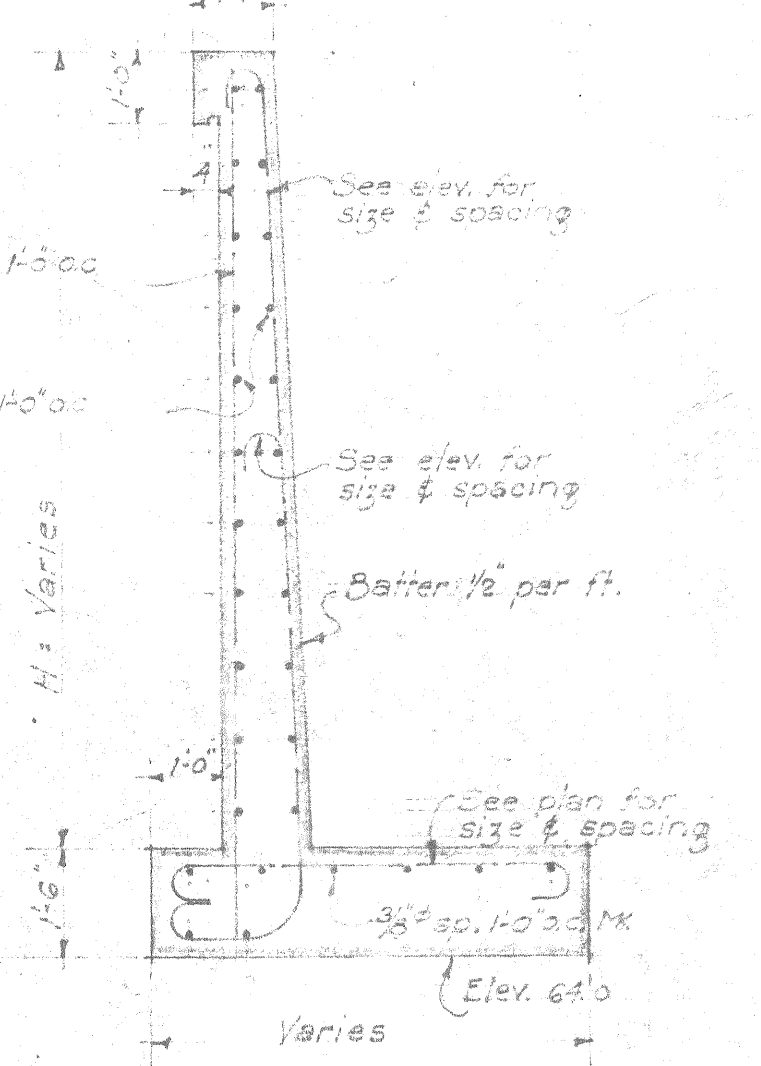
SECTION B-B.
3/8" Scale.



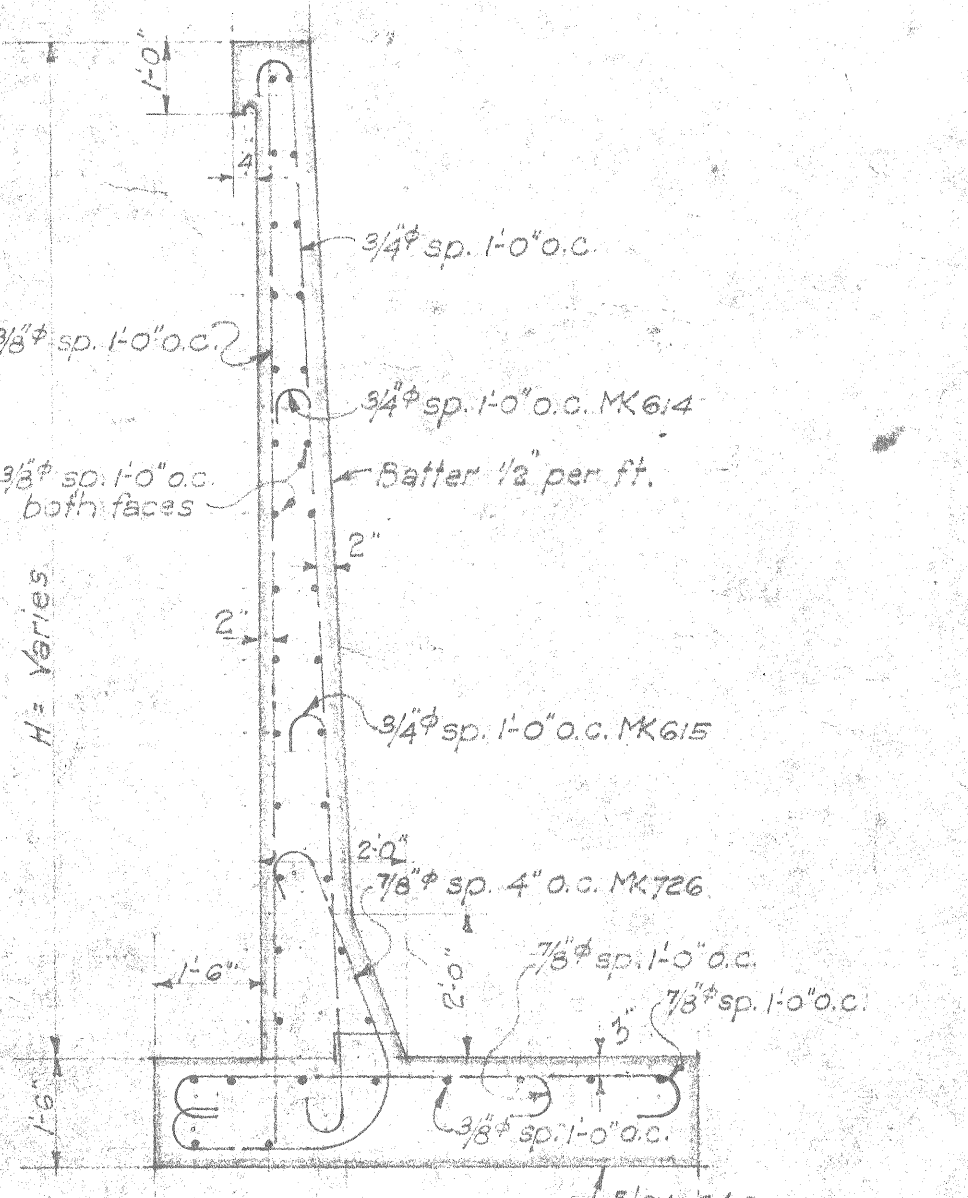
SECTION A-A.
3/8" Scale.



SEC. THRU ABUT. NO. 2.
3/8" Scale.

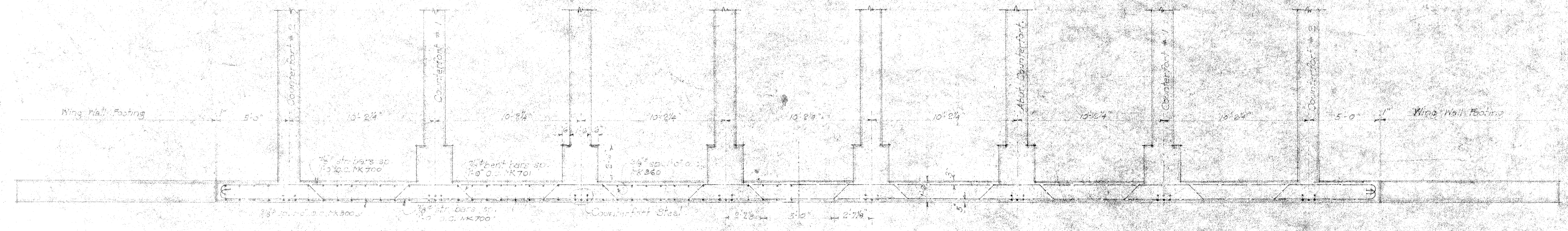


SEC. THRU WING WALLS.
3/8" Scale.

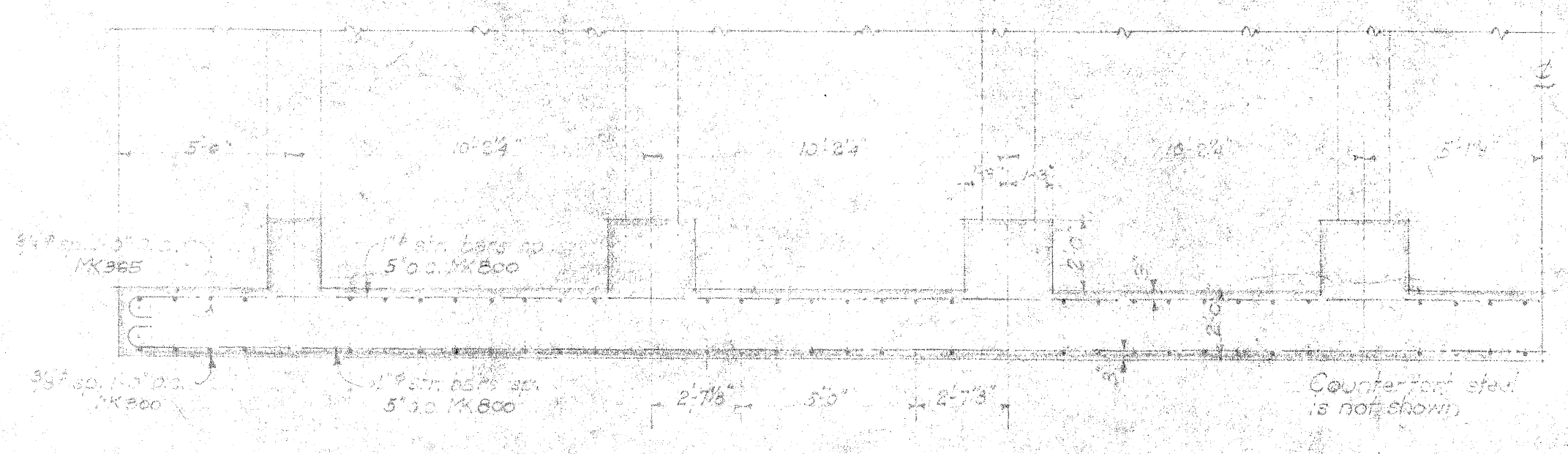


TYPE "B" WALL.
3/8" Scale.

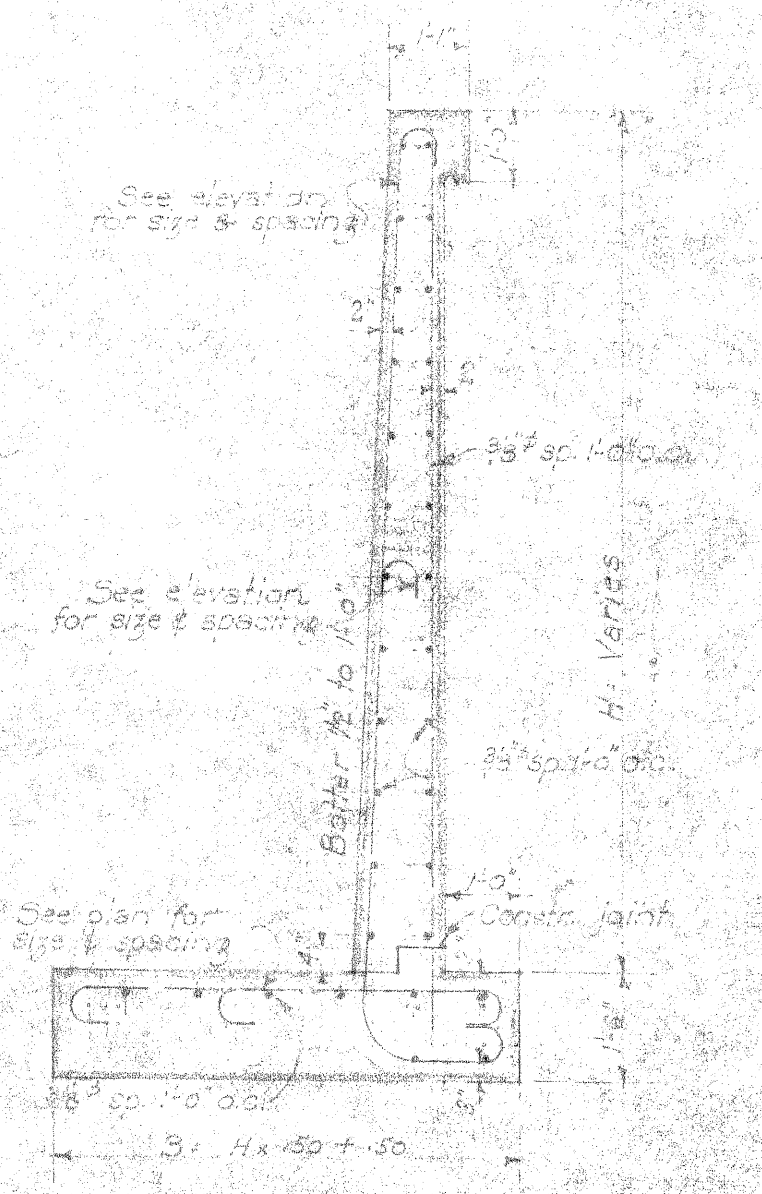
TERRITORIAL HIGHWAY DEPARTMENT.
TERRITORY OF HAWAII.
HONOLULU BRIDGE.
WAIANAE ROAD F.A.P. 4-C.
DATE FEB. 1938 SCALES AS NOTED
SHEET NO. 3 OF 6 SHEETS.



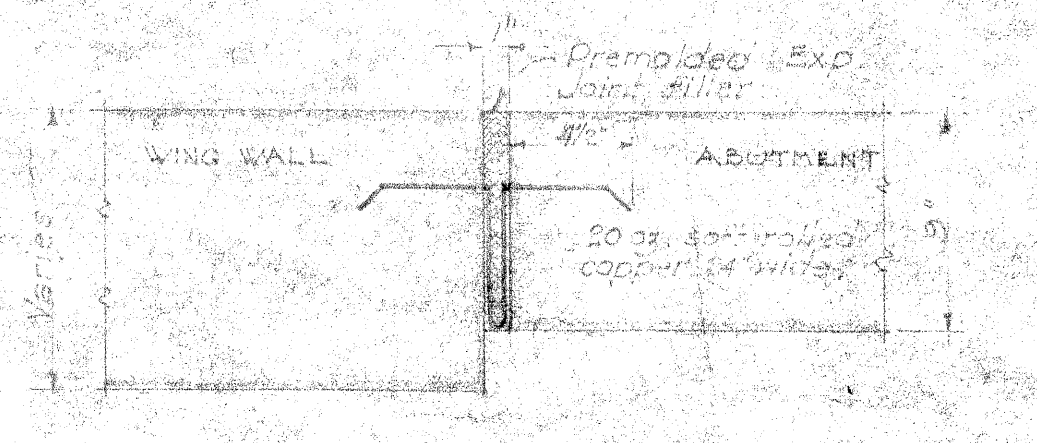
SLC THRU TOP HALF OF ABUT. NO. 1 FOOTING
1/4\"/>



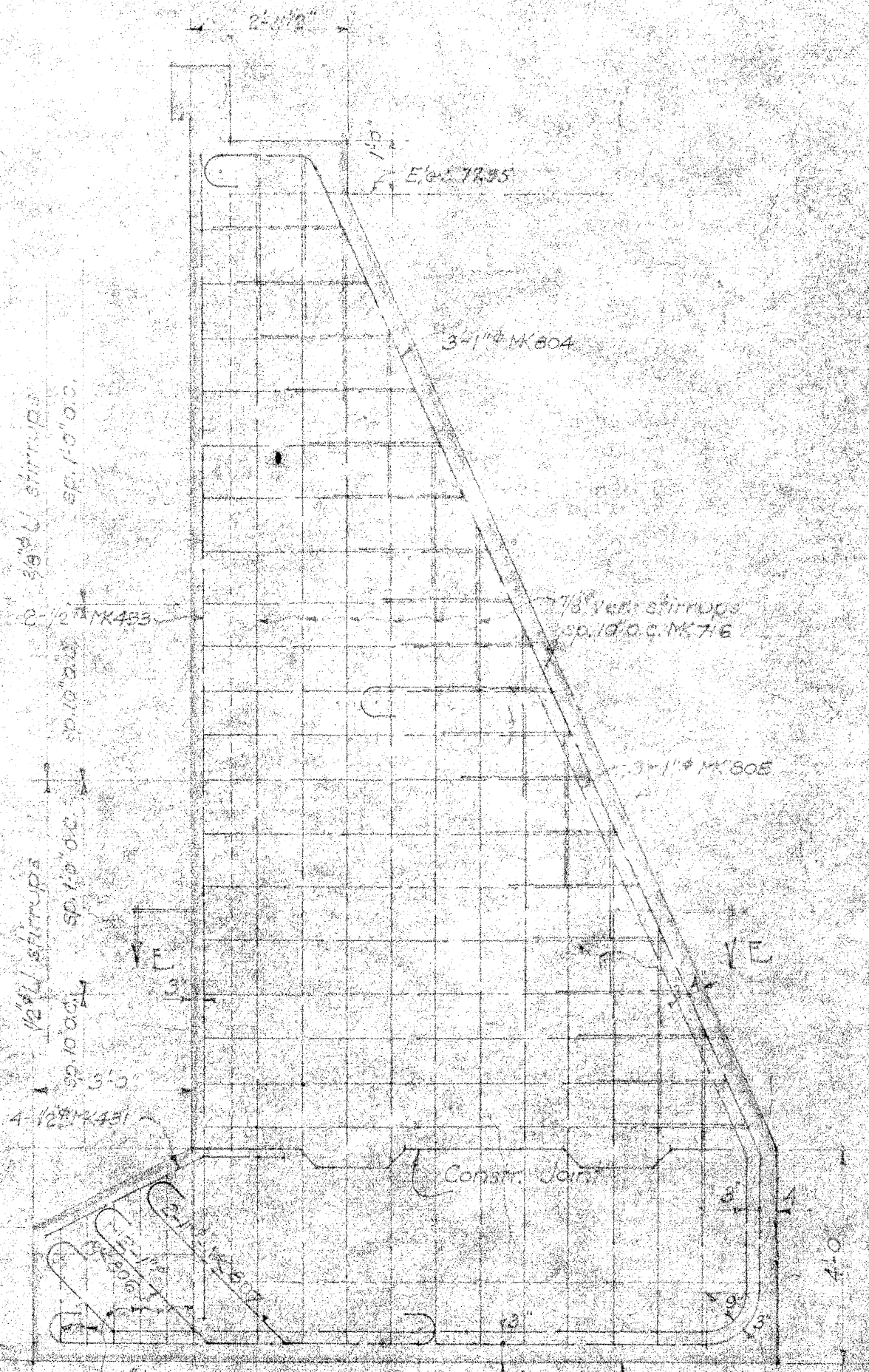
HALF SEC. THRU TOE OF ABUT. NO. 1 FOOTING
1/4\"/>



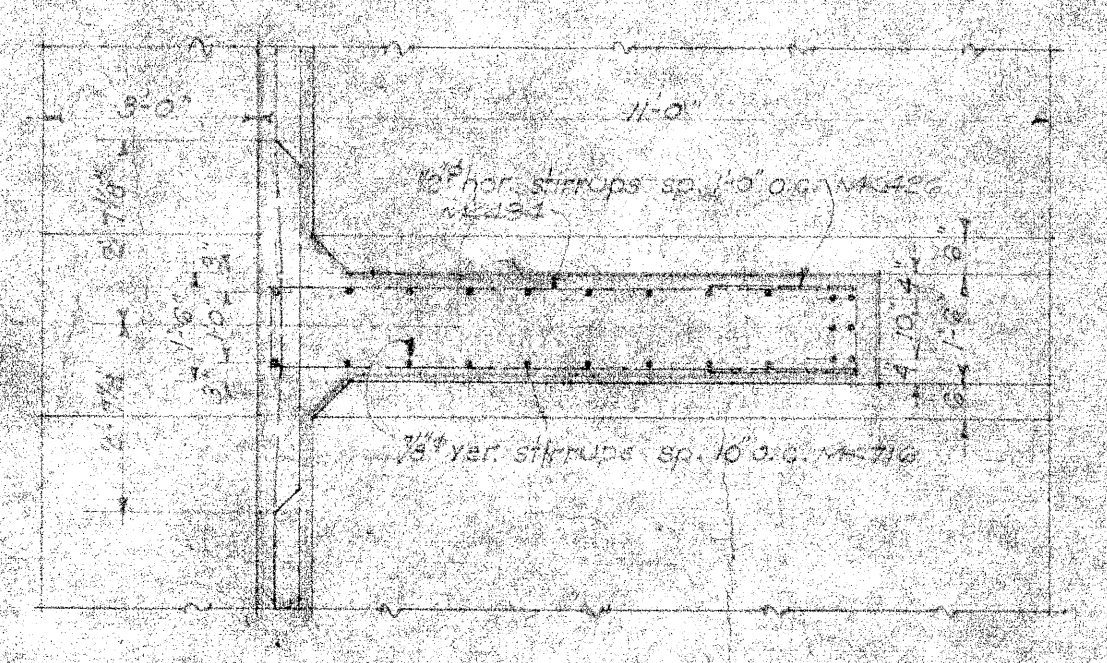
SEC. THRU WING WALL
3/8\"/>



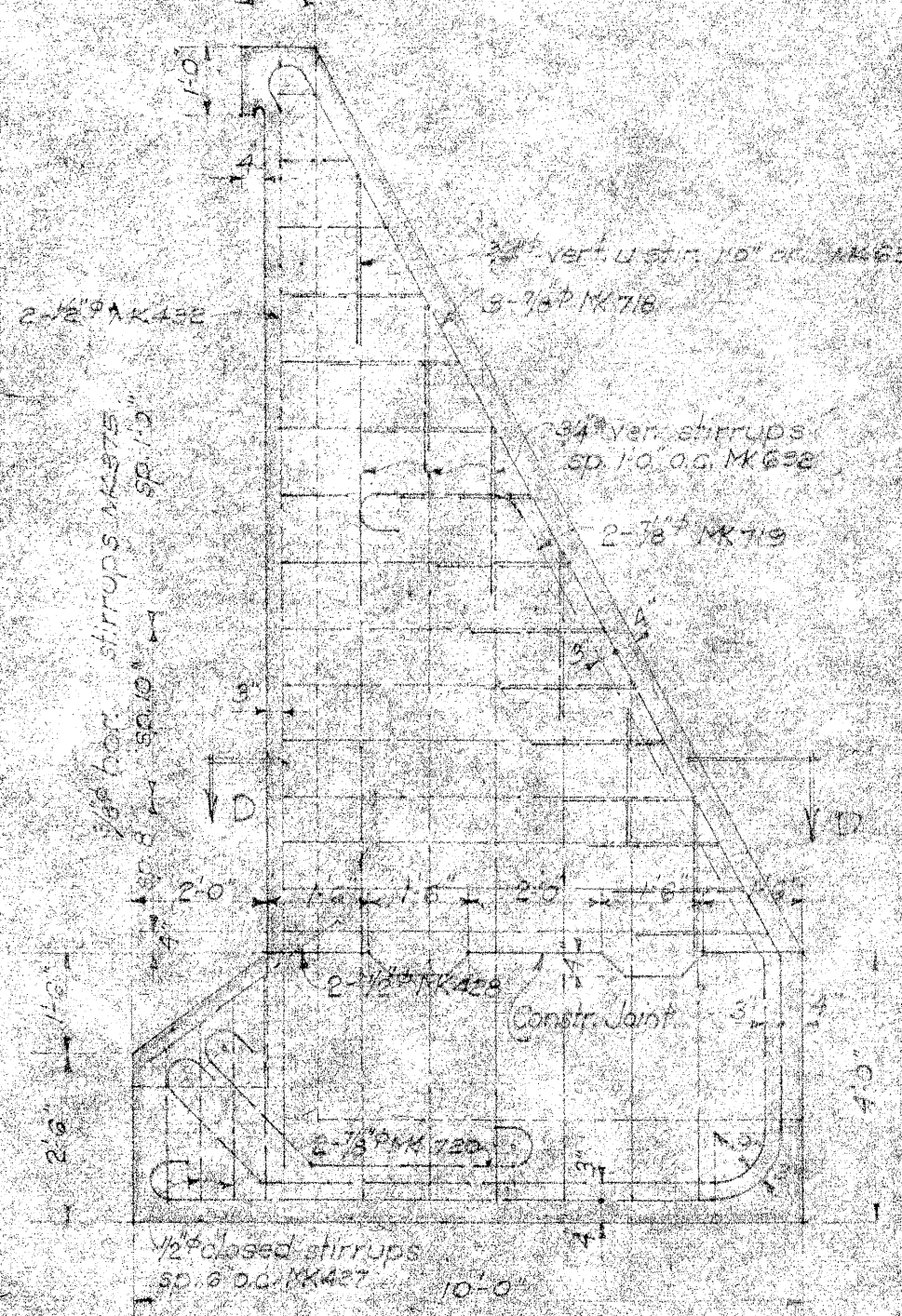
WING WALL EXP. JOINT
1/2\"/>



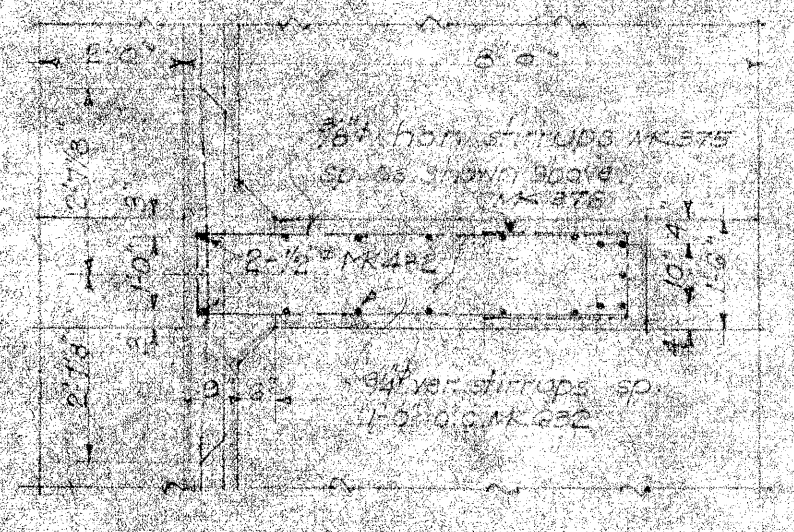
SEC. THRU C OF COUNTERFORT * 2
3/8\"/>



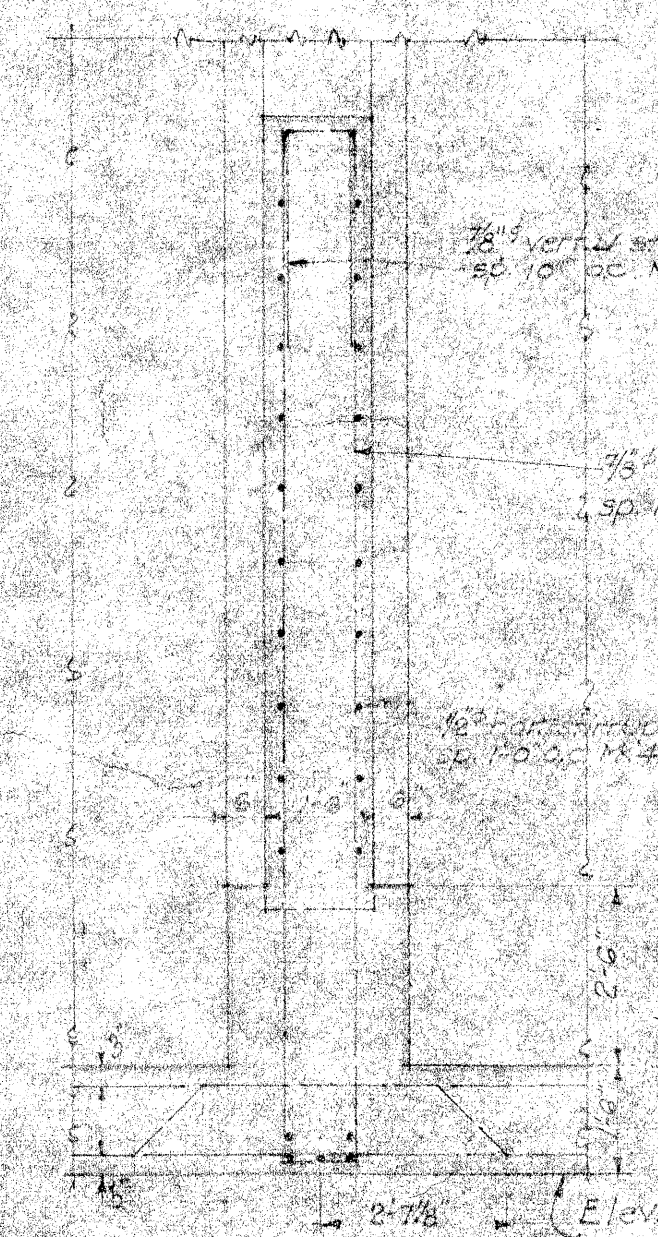
SECTION I-I
3/8\"/>



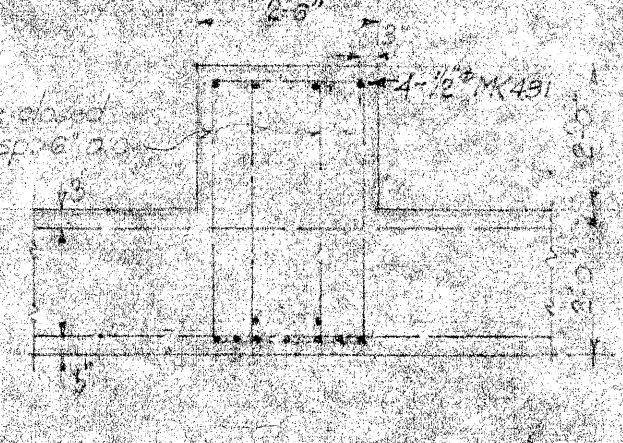
SEC. THRU E OF COUNTERFORT * 2
3/8\"/>



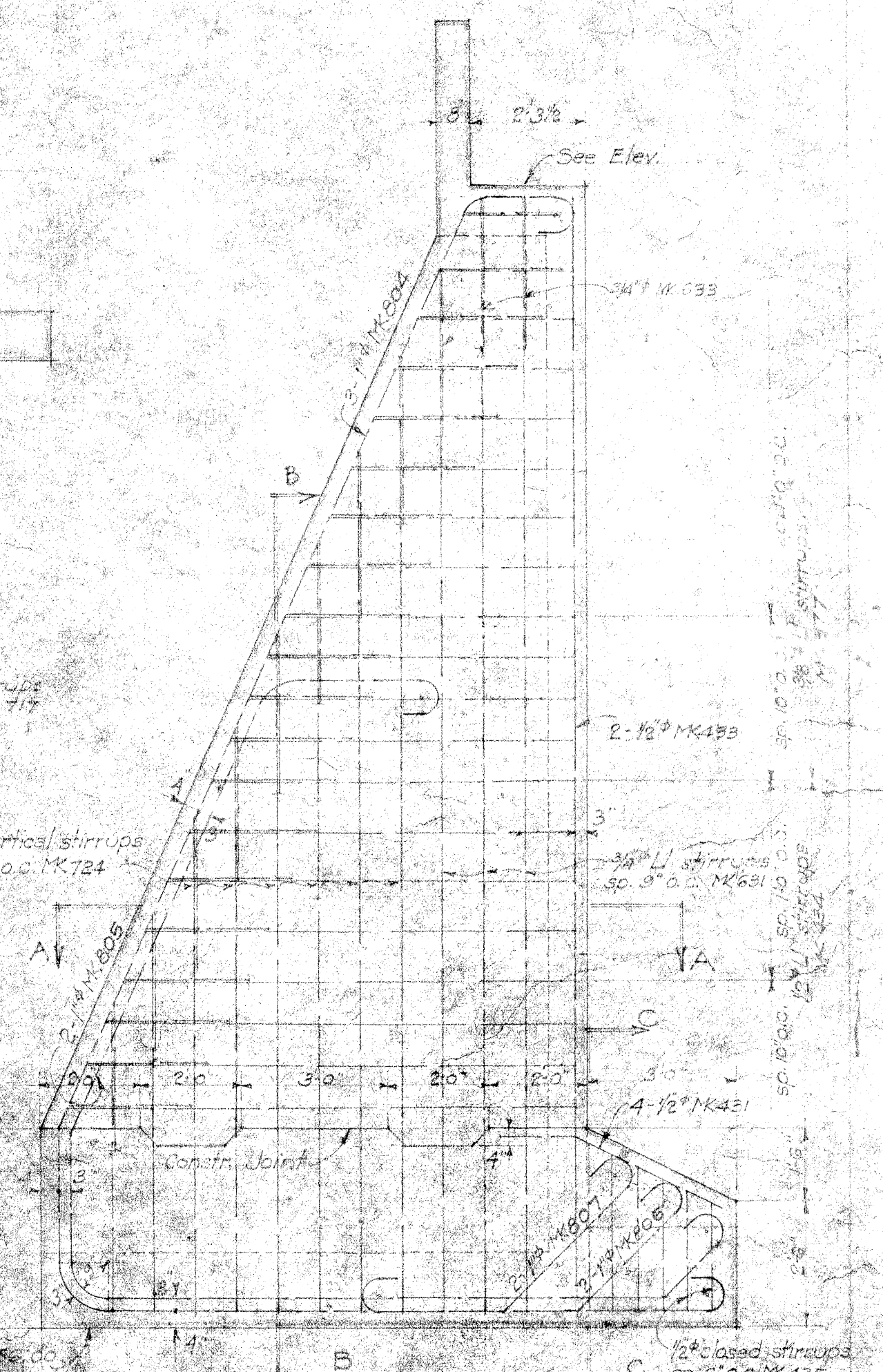
SECTION C-D
3/8\"/>



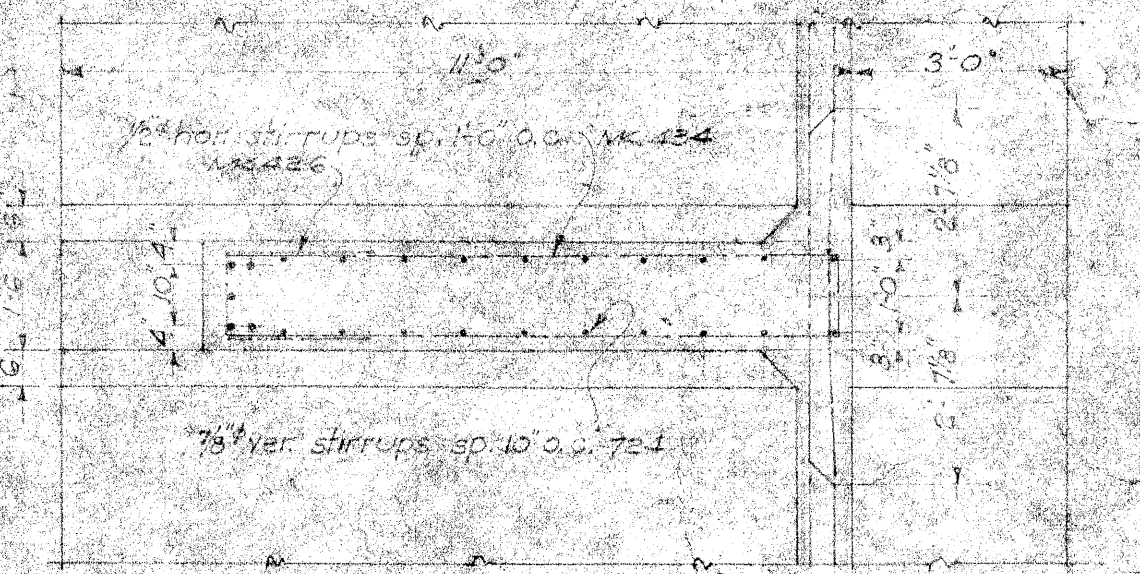
SECTION B-B
3/8\"/>



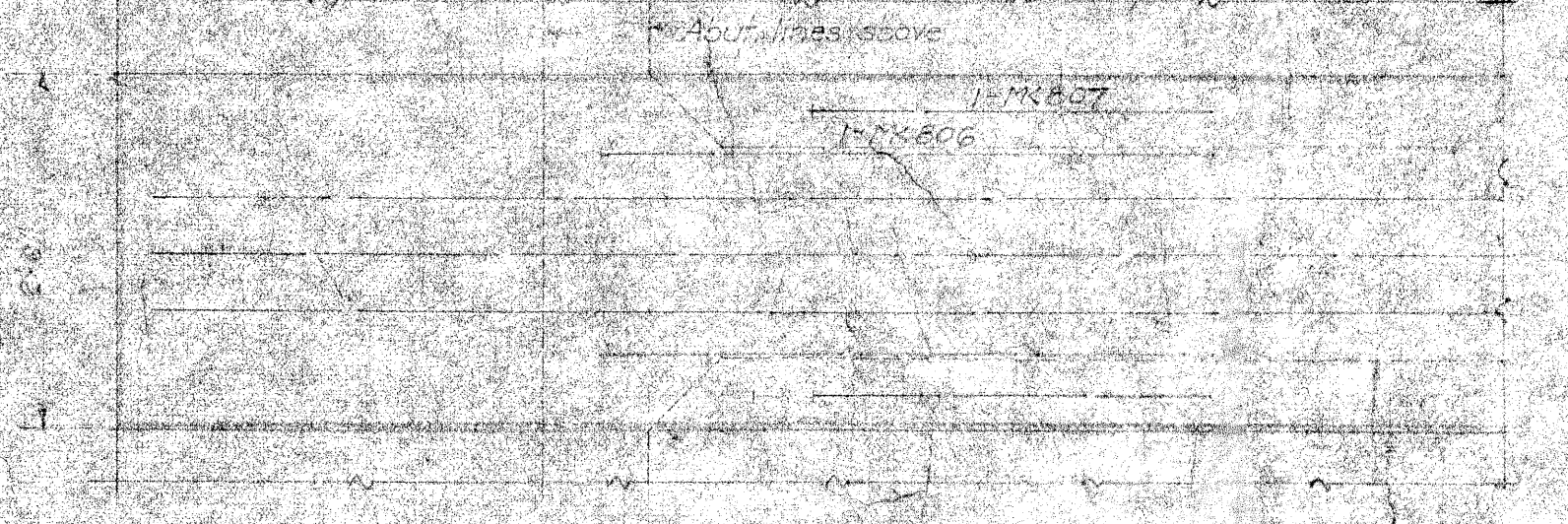
SECTION C-C
3/8\"/>



SEC. THRU E OF ABUT. COUNTERFORT
3/8\"/>



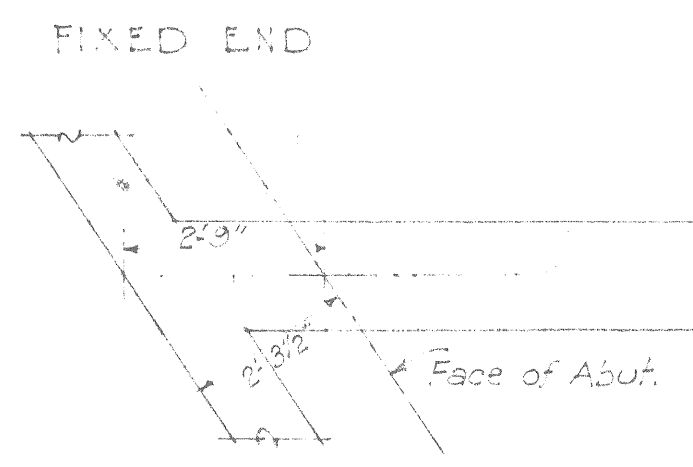
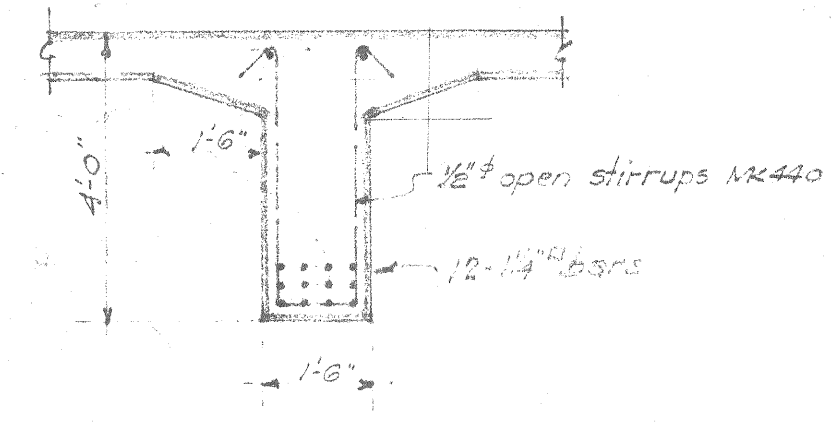
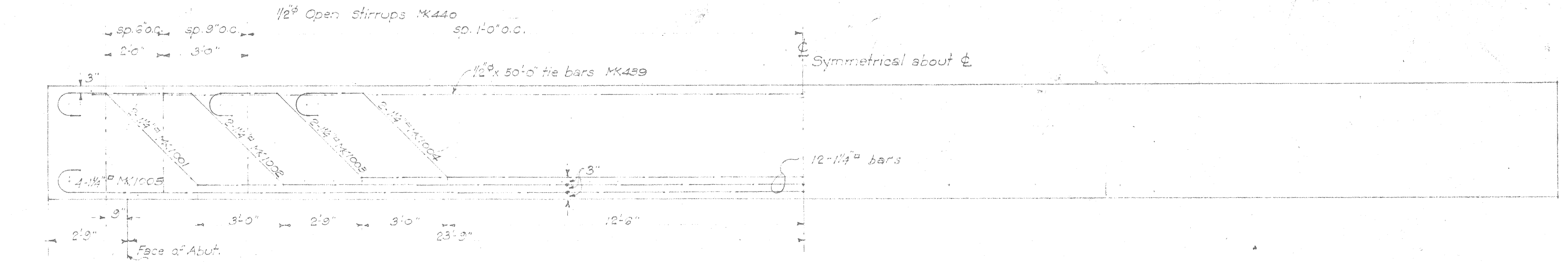
SECTION A-A
3/8\"/>



PLAN SHOWING LOCATION OF SHEAR BASES
1/4\"/>

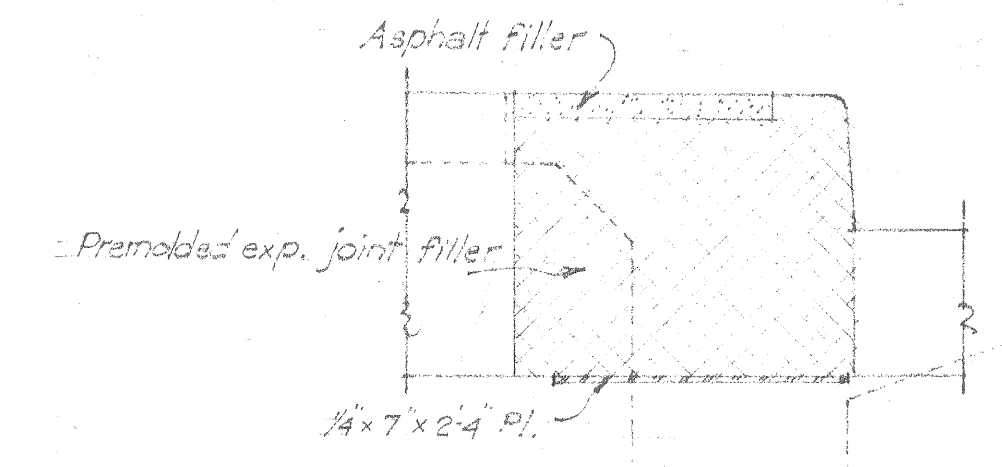
TERRITORIAL HIGHWAY DEPARTMENT
 TERRITORY OF HAWAII
HONOLULU BRIDGE
 WAIANAE ROAD - PART 4-C
 DATE, FEB. 1936
 SCALES AS NOTED
 SHEET NO. 4 OF 6 SHEETS

YEAR ROAD	STATE	FED. AID	FISCAL	CONTRACT	SHEET
HAWAII	HAW	4C	1938	40	75

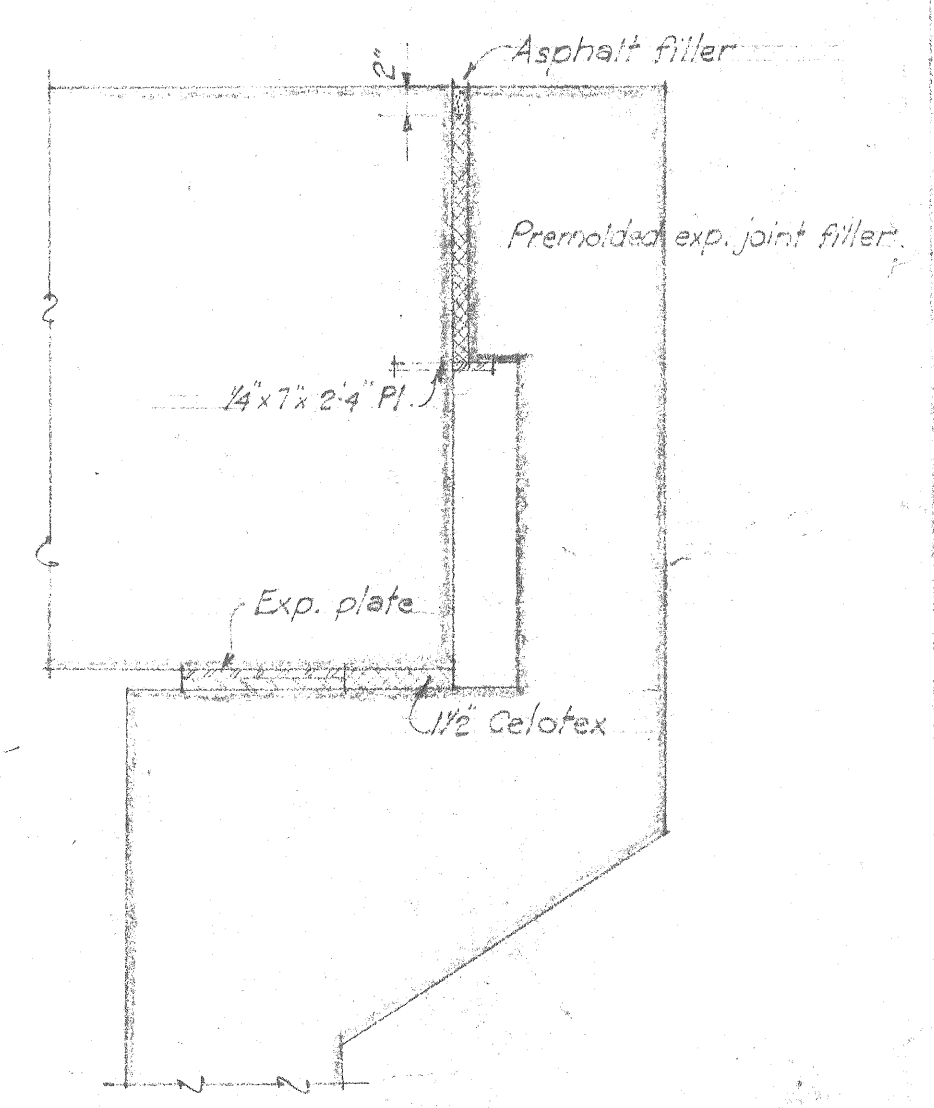


DETAIL OF G-2 & G-3.
3/4 Scale.

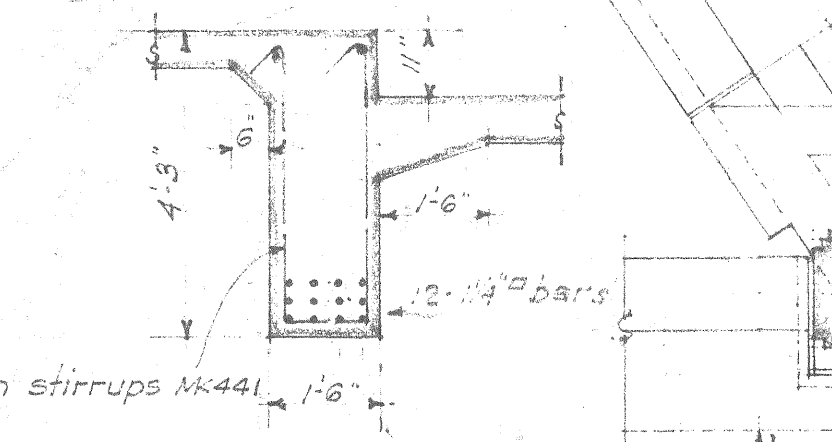
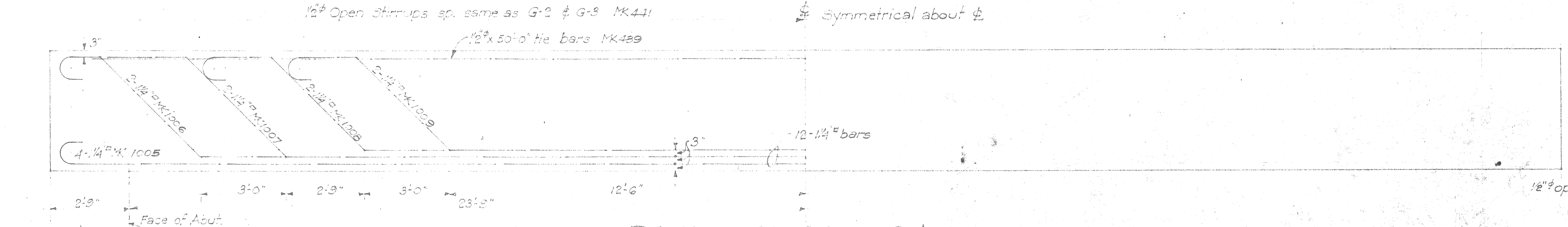
EXP. END



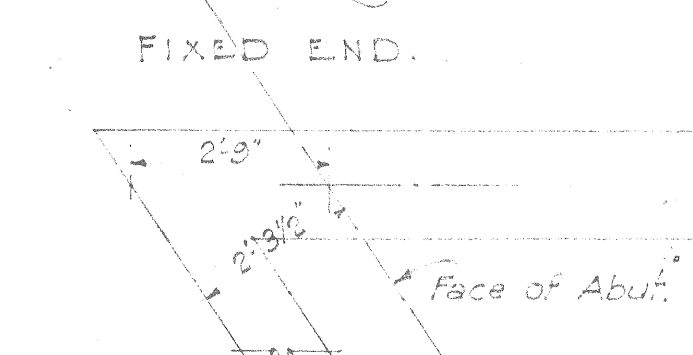
SECTION Y-Y
3/4 Scale.



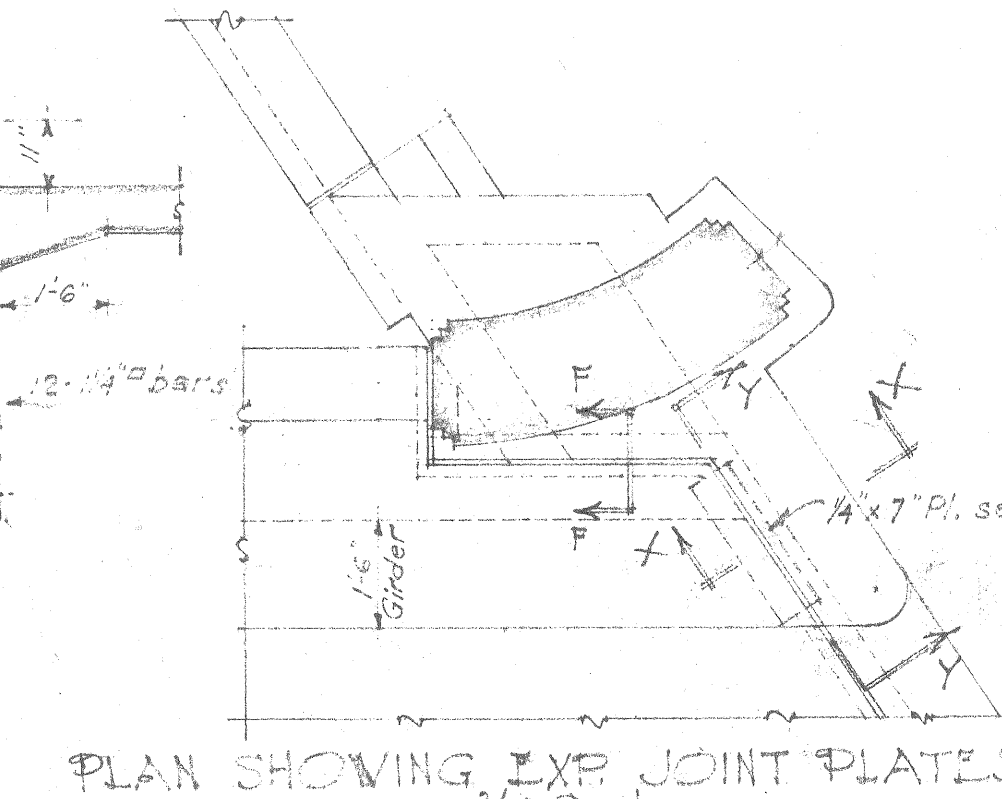
SECTION X-X
3/4 Scale.



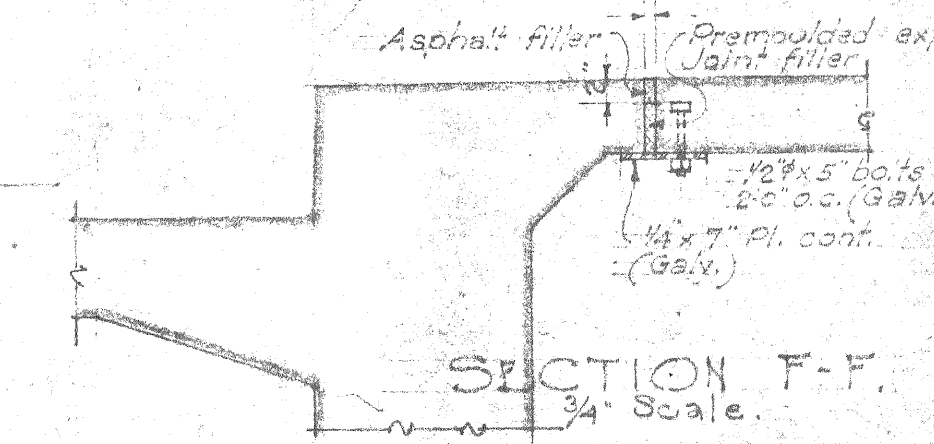
EXP. END



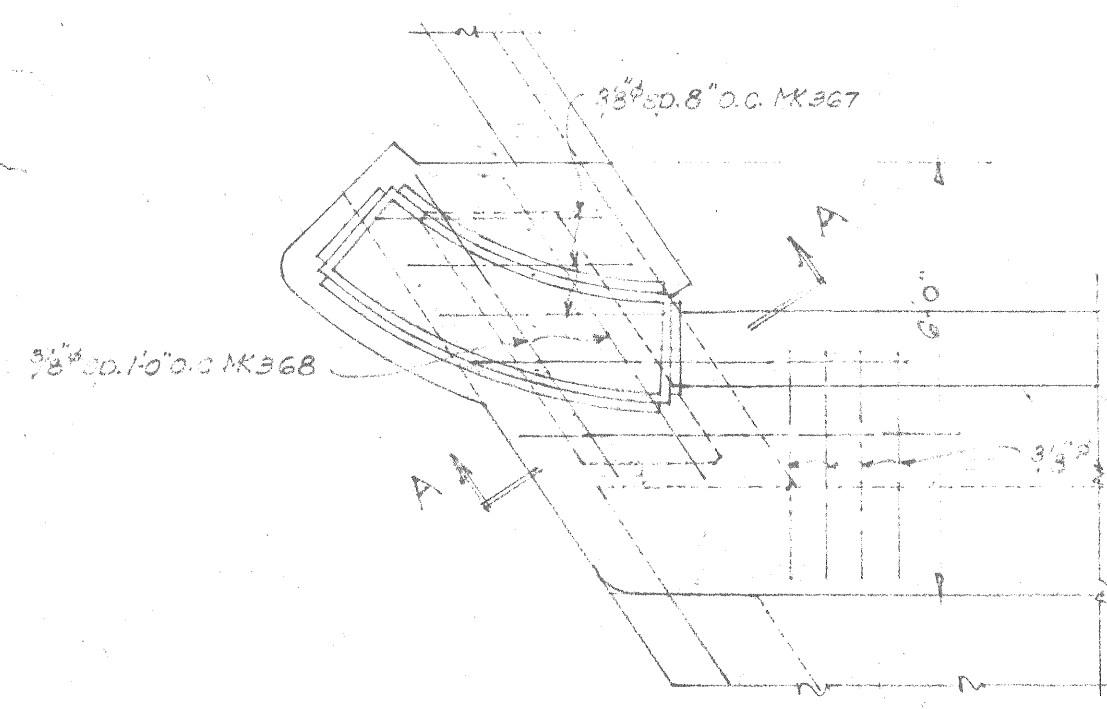
DETAIL OF G-1 & G-4.
3/8 Scale.



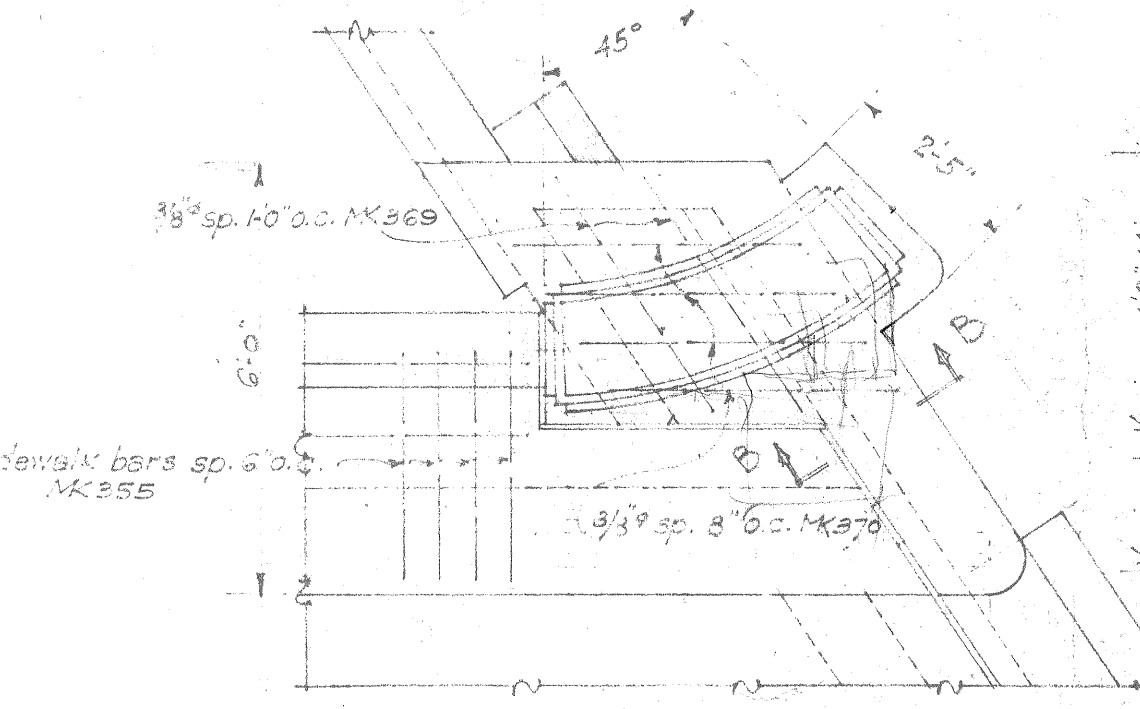
PLAN SHOWING EXP. JOINT PLATES.
3/8 Scale.



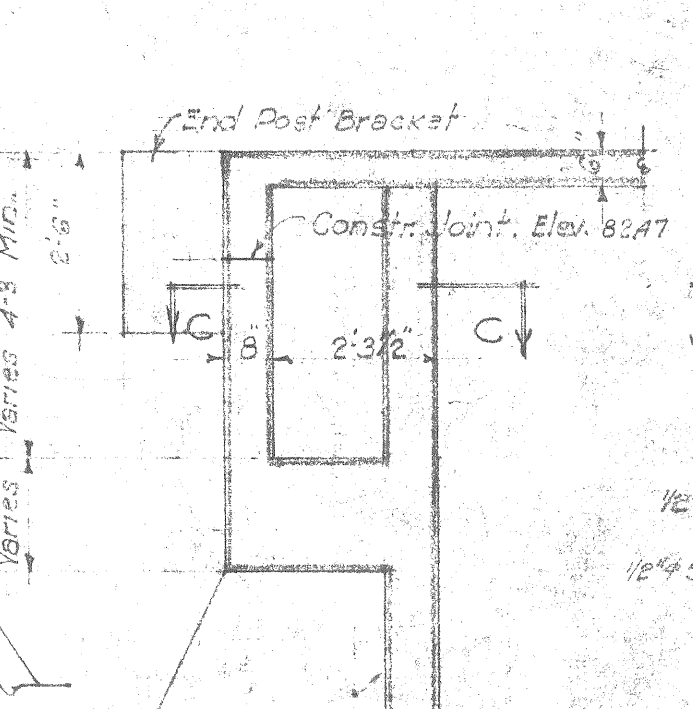
SECTION F-F
3/4 Scale.



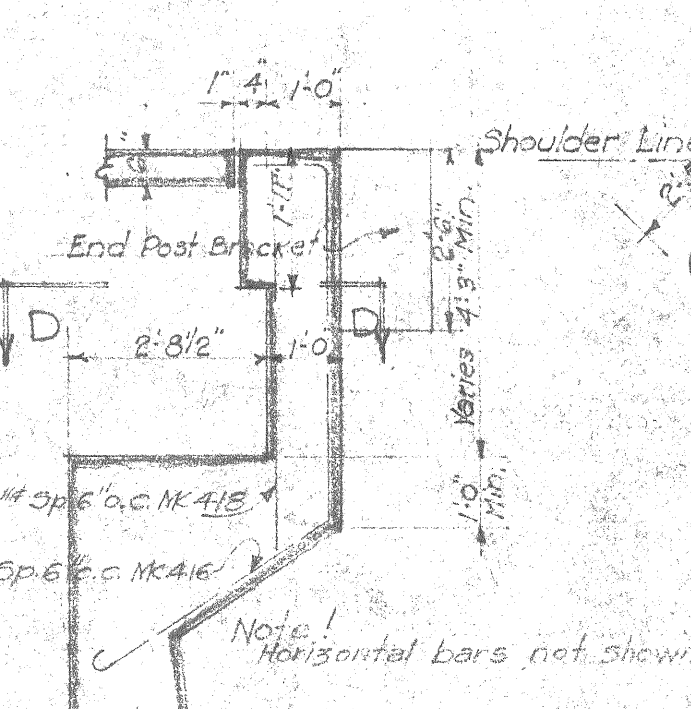
ABUT. NO 1 LEFT SIDE
3/8 Scale.



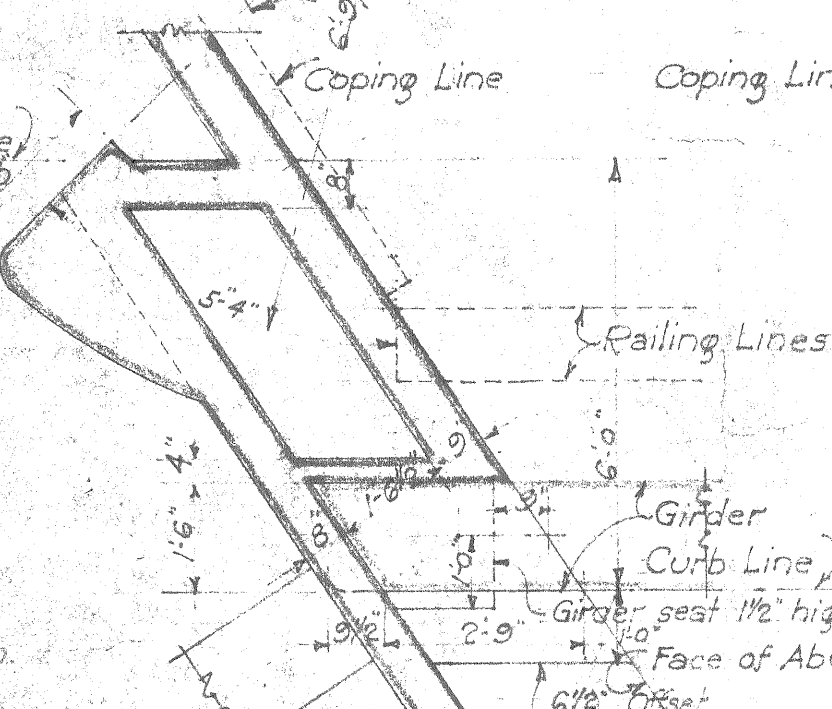
ABUT. NO 2 LEFT SIDE
3/8 Scale.



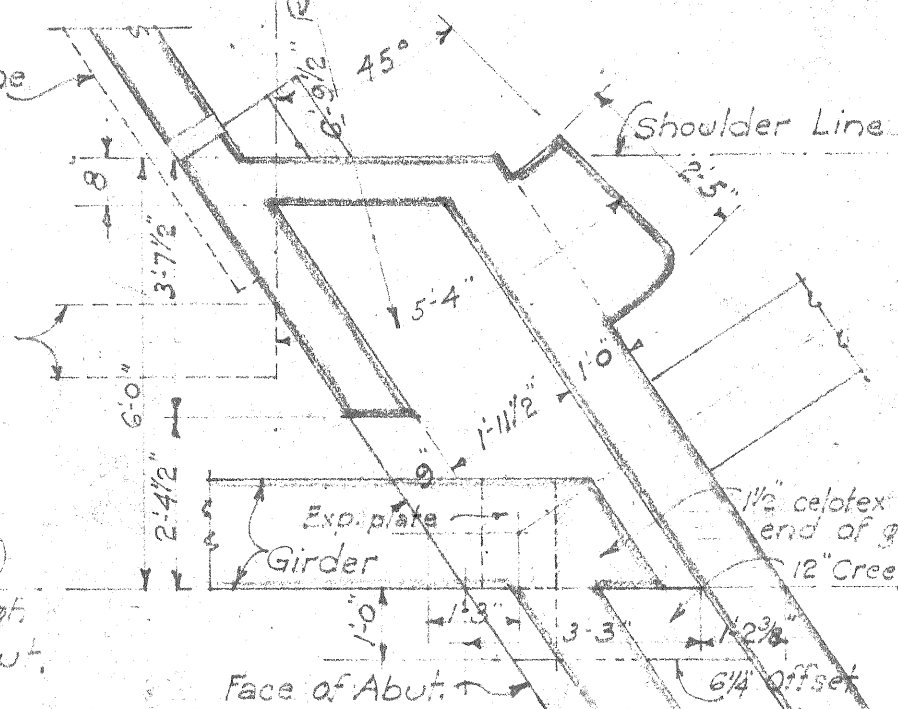
ABUTMENT NO 1
SECTION A-A
3/8 Scale.



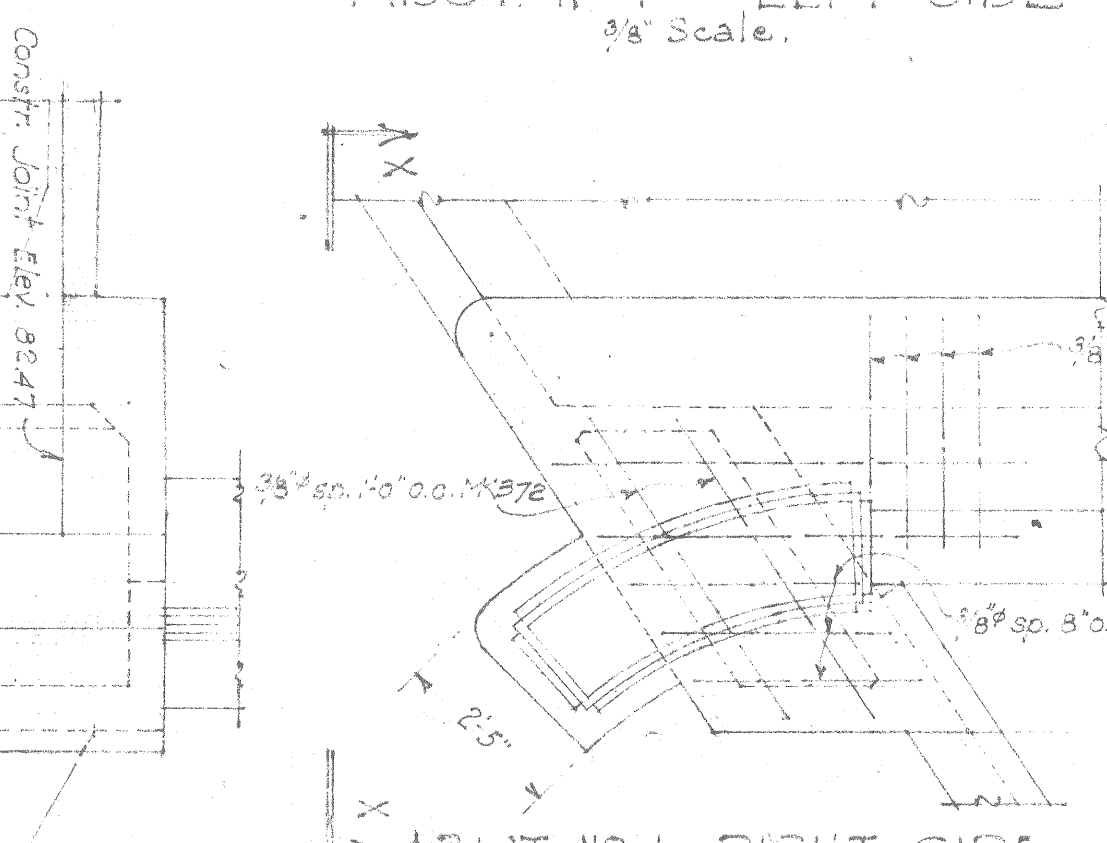
ABUTMENT NO 2
SECTION B-B
3/8 Scale.



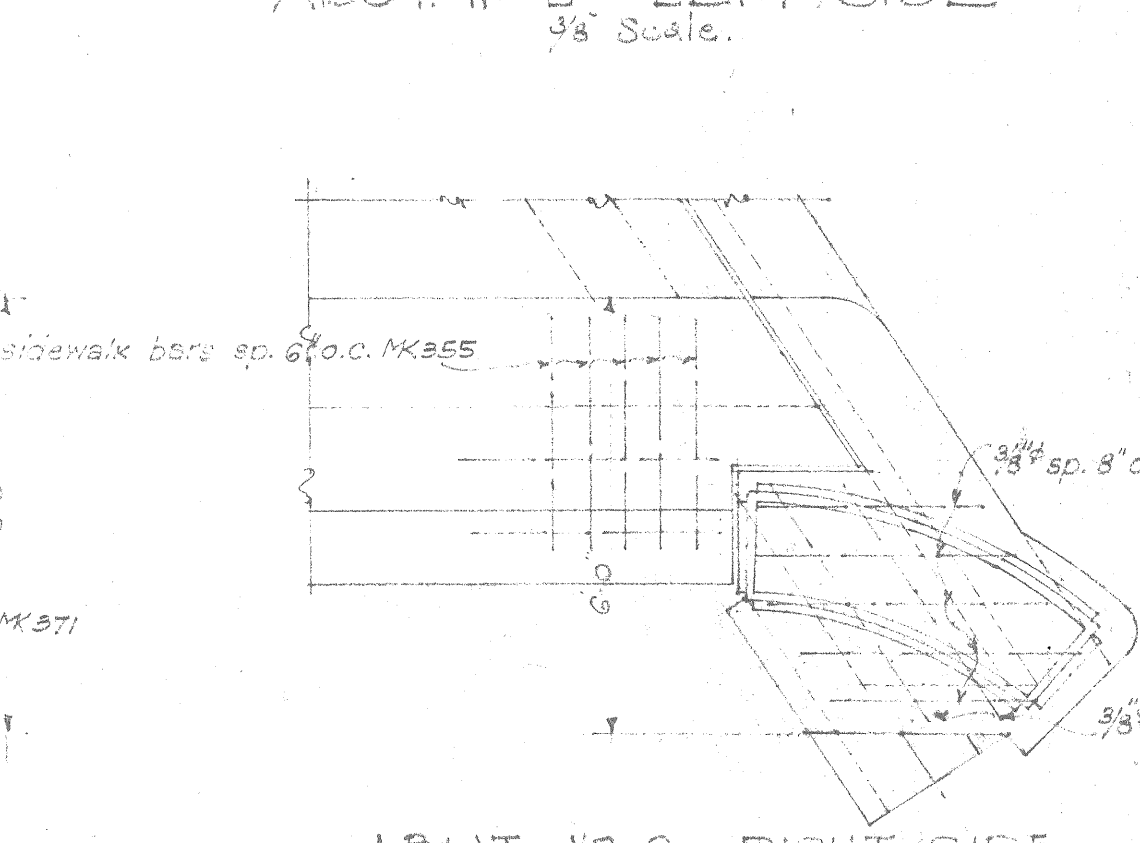
SECTION C-C LEFT
3/8 Scale.



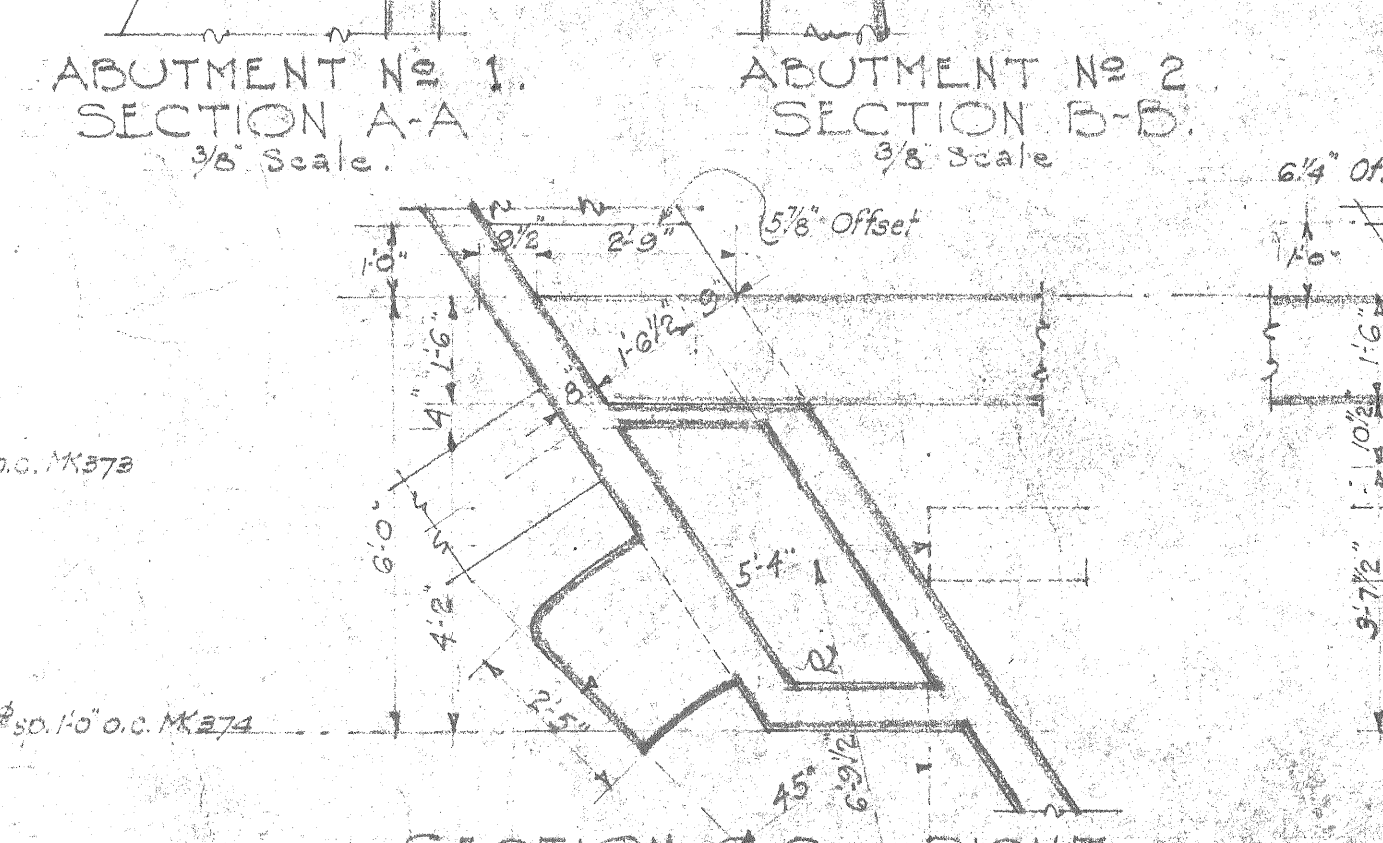
SECTION D-D LEFT
3/8 Scale.



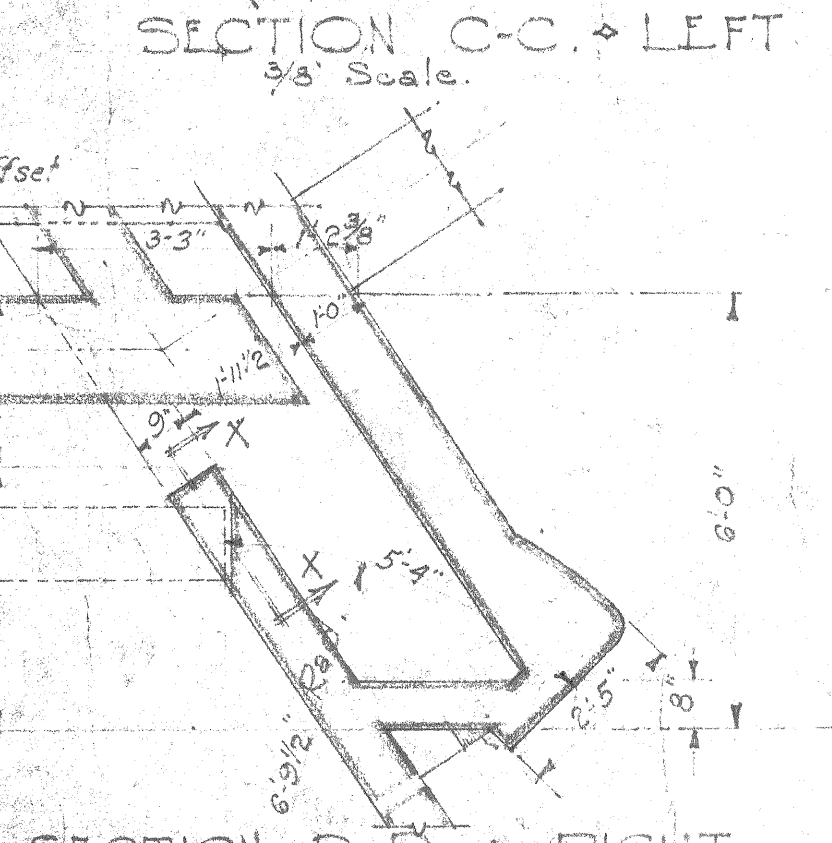
ABUT. NO 1 RIGHT SIDE
3/8 Scale.



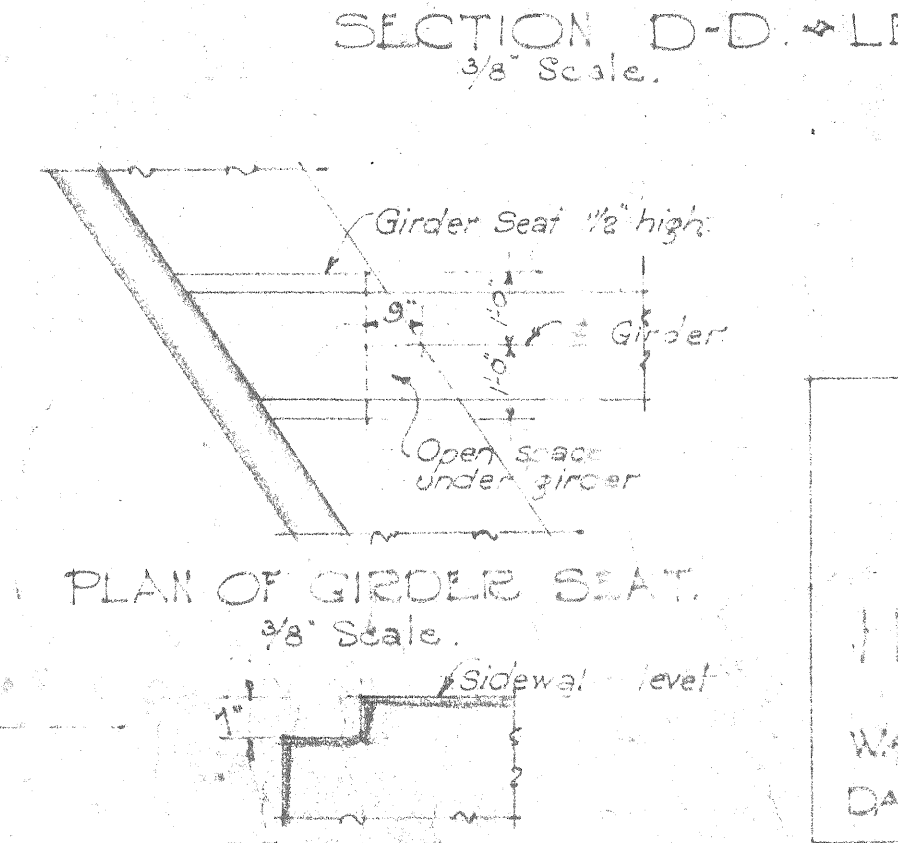
ABUT. NO 2 RIGHT SIDE
3/8 Scale.



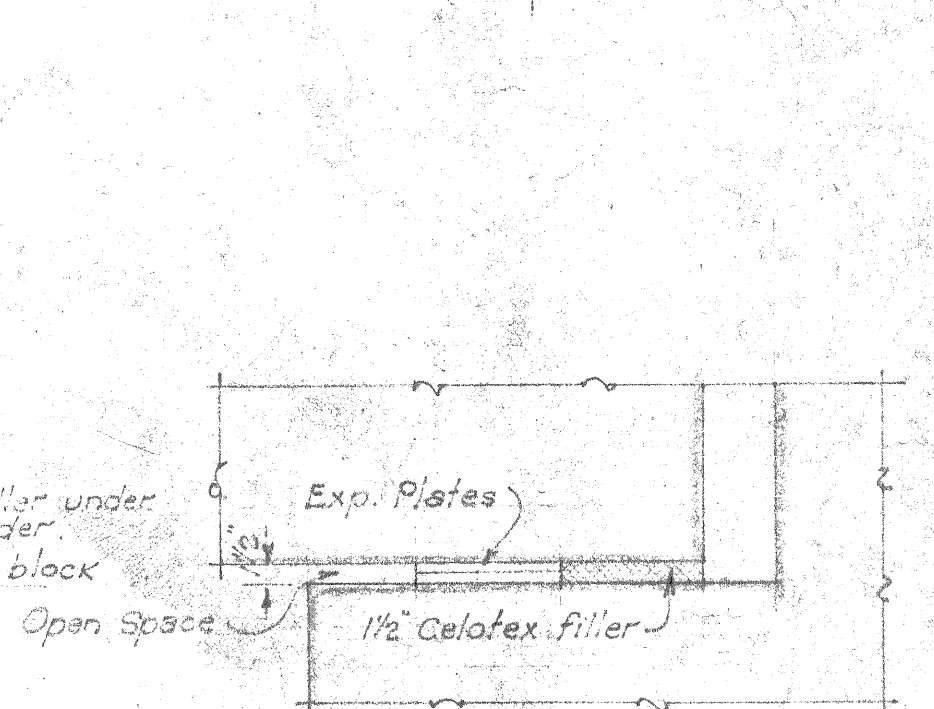
SECTION C-C RIGHT
3/8 Scale.



SECTION D-D RIGHT
3/8 Scale.



PLAN OF GIRDER SEAT
3/8 Scale.



SECTION X-X
3/4 Scale.

TERRITORIAL HIGHWAY DEPARTMENT,
TERRITORY OF HAWAII.

HONOLULU BRIDGE.

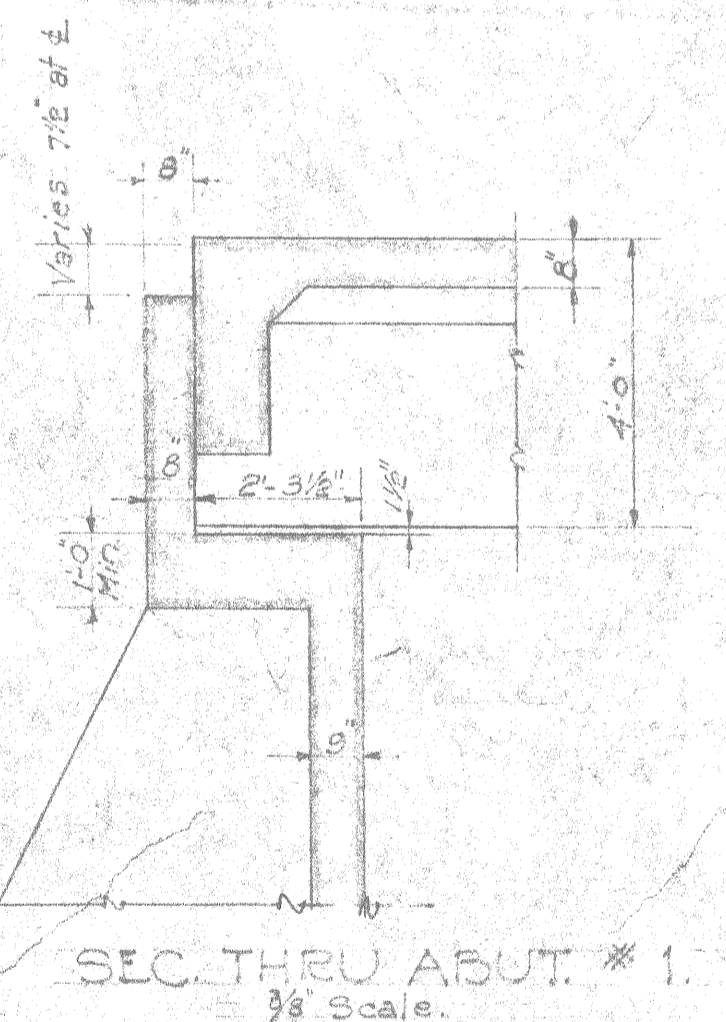
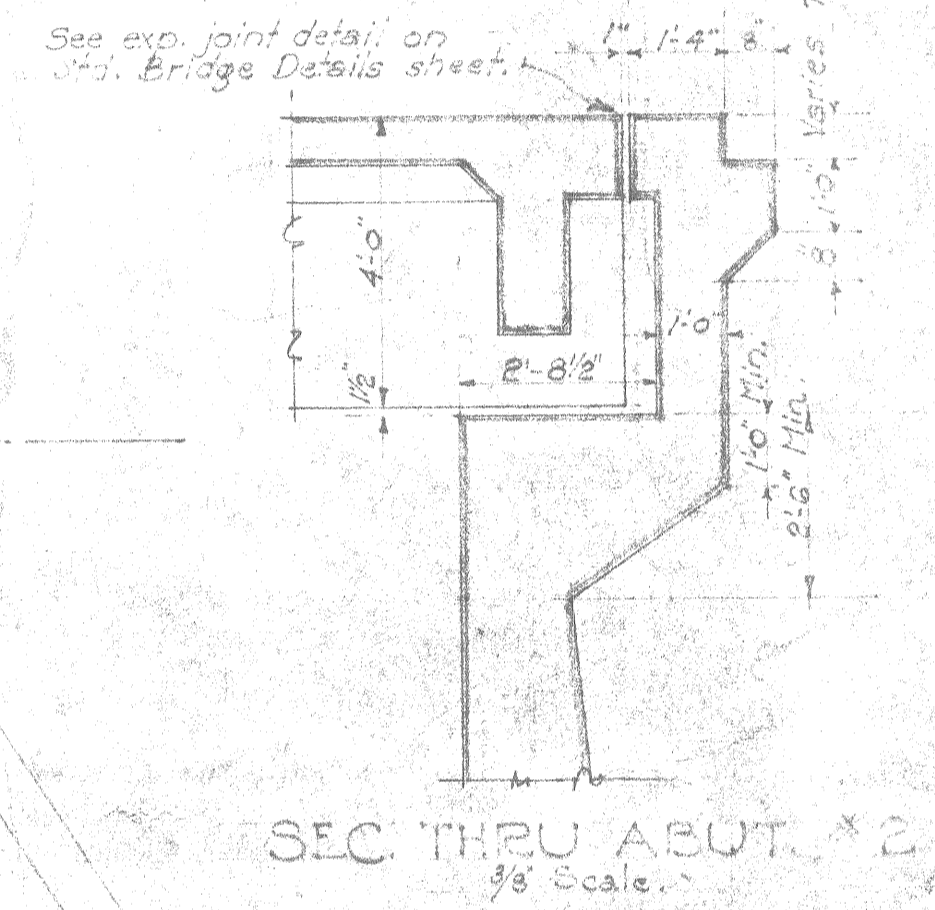
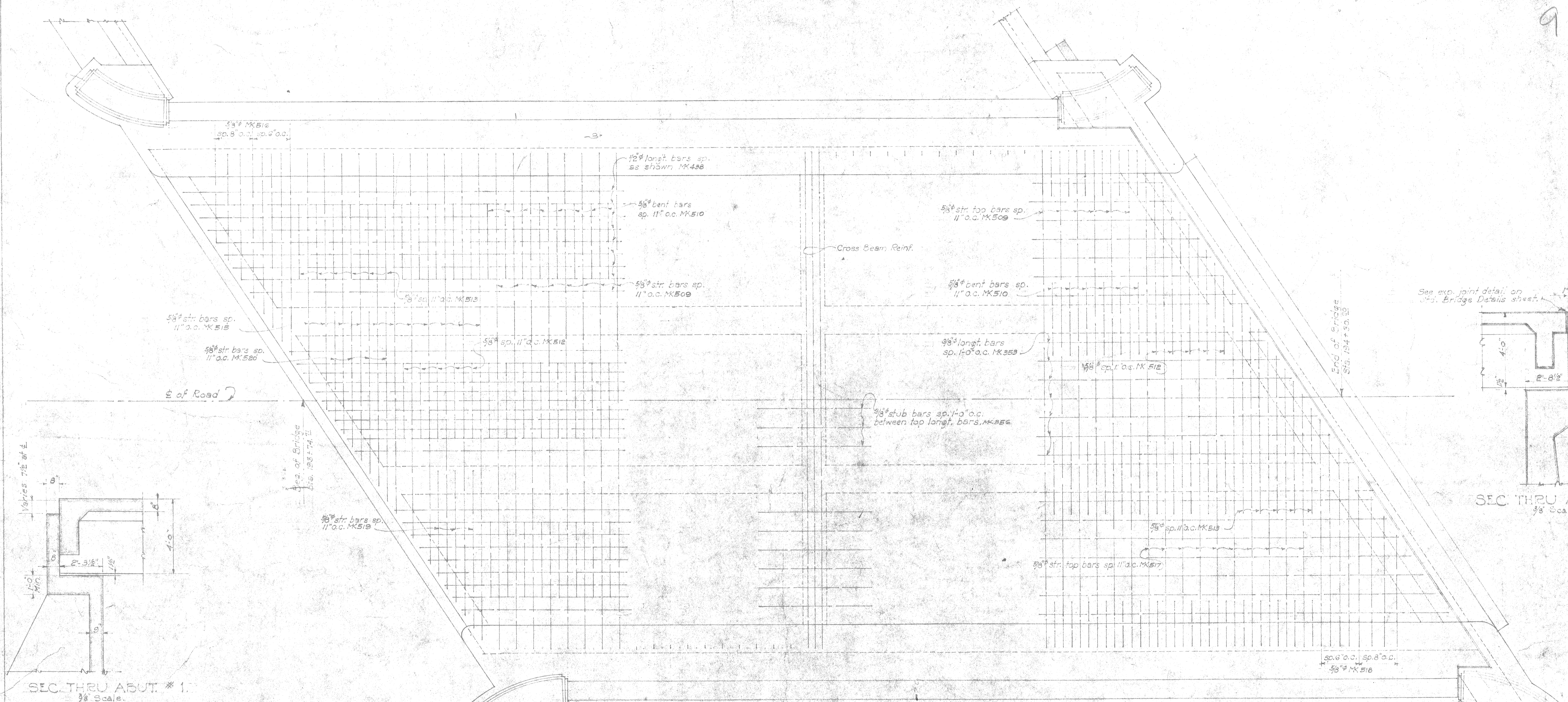
WAIANAE ROAD F.A.P. 410.
DATE FEB. 1938 SCALES AS NOTED.

SHEET NO. 5 OF 6 SHEETS.

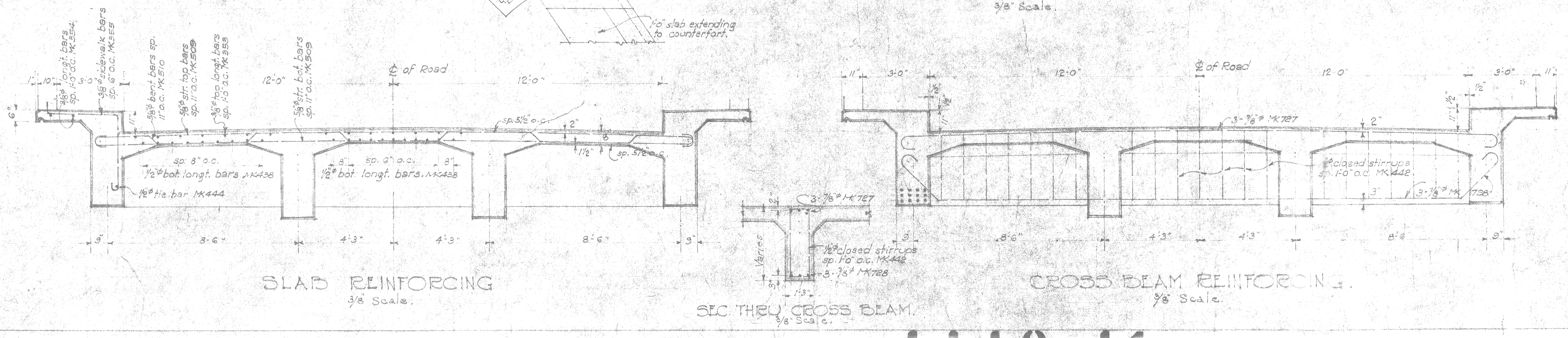
4449.40

PROJECT NO.	STA.	DATE	BY	CHECKED	APPROVED
HAWAII 4-C	1338	4-1	75		

922



SLAB STEEL LAYOUT.
3/8 Scale.



TERRITORIAL HIGHWAY DEPARTMENT
 TERRITORY OF HAWAII
FARR HWY BR.
(HONOLULU BRIDGE)
 WAIANA'E ROAD F.A.P. 4-C
 DATE FEB. 1938 SCALES AS NOTED
 SHEET NO. 6 OF 6 SHEETS

J. E. Bartels
 W. E. Wagner
 C. H. V. King
 W. E. Bartels